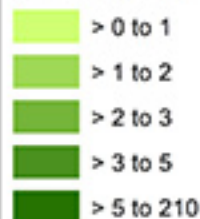


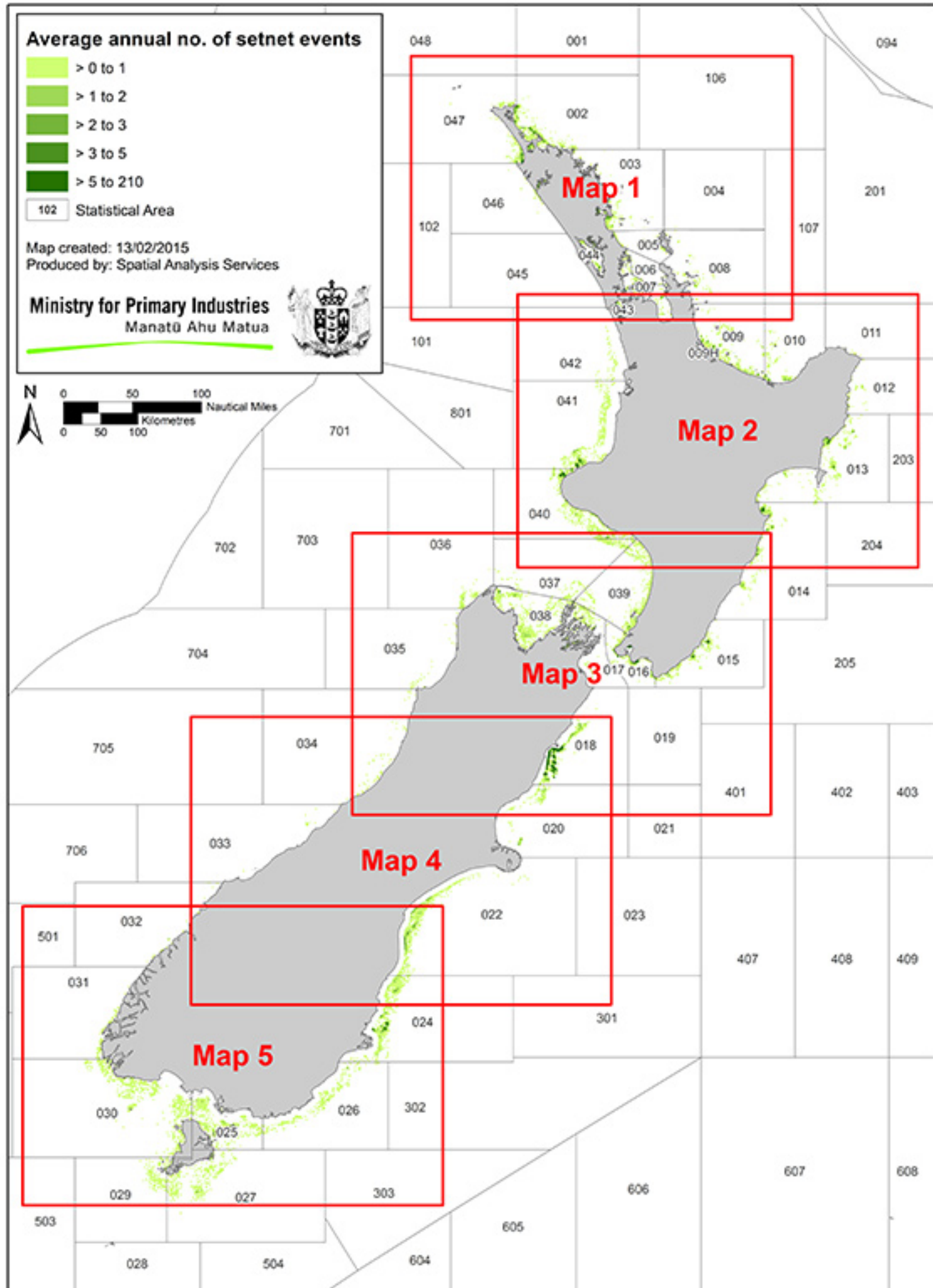
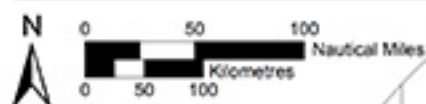
Average annual no. of setnet events

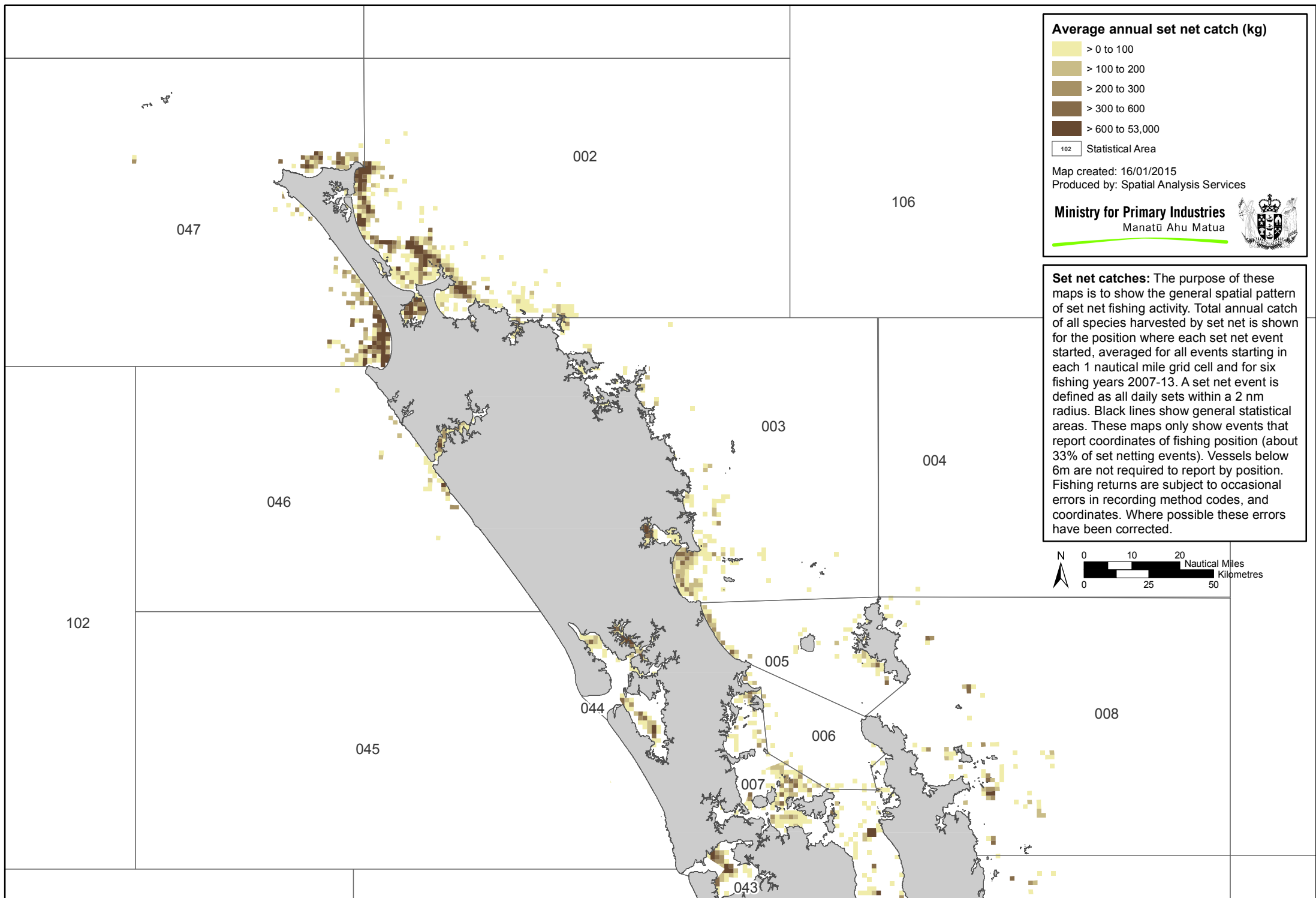


102 Statistical Area

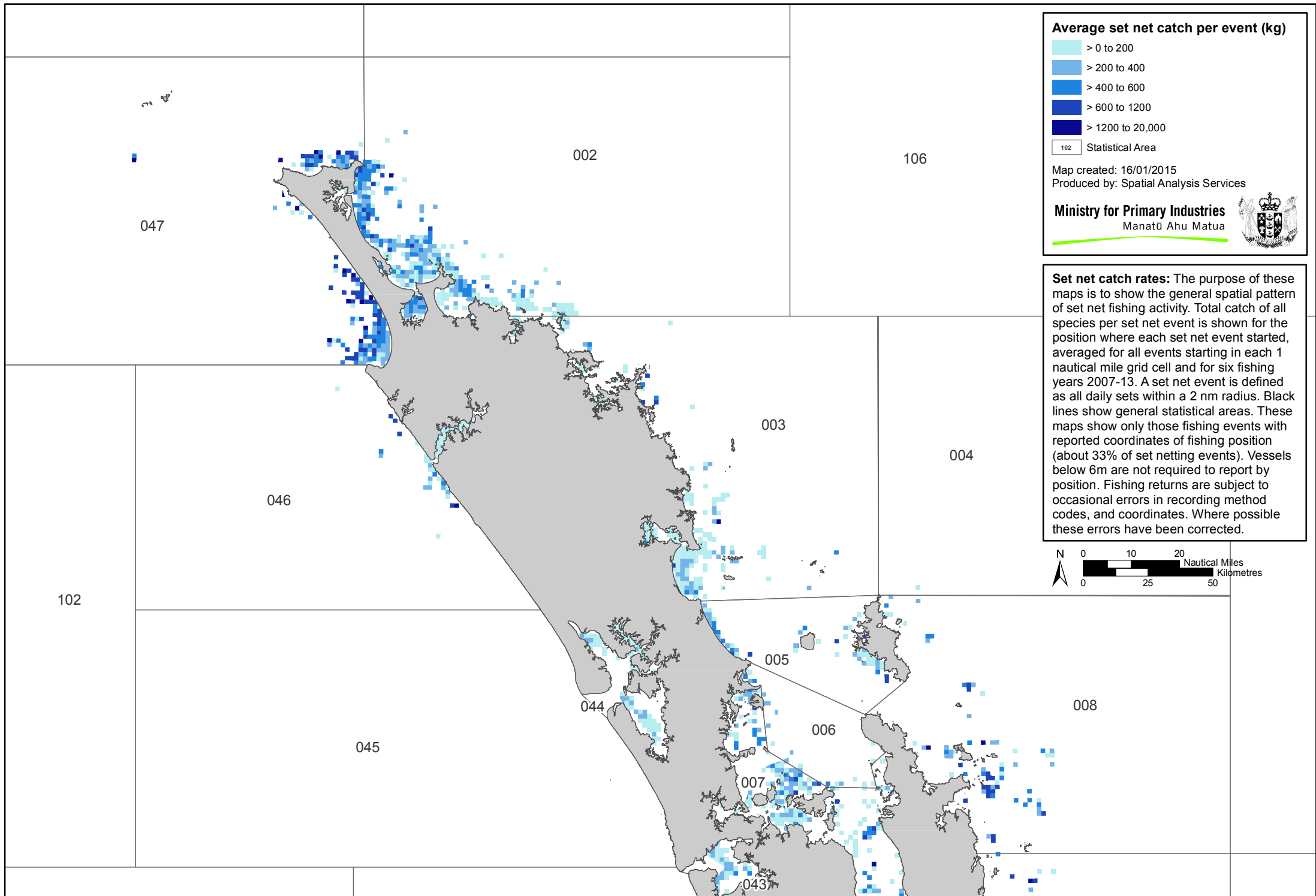
Map created: 13/02/2015
Produced by: Spatial Analysis Services

Ministry for Primary Industries
Manatū Ahu Matua

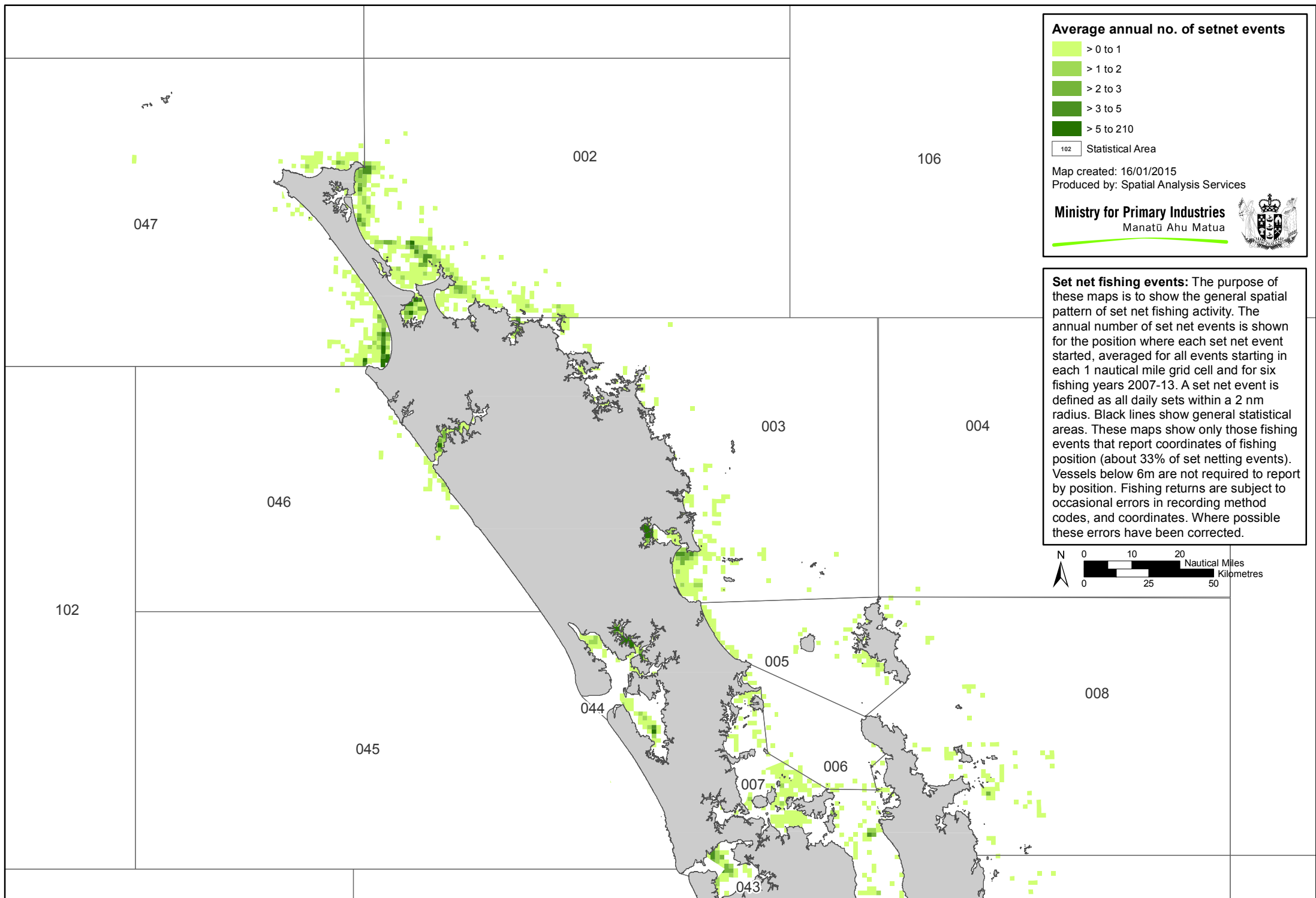




Disclaimer: This map and all information accompanying it (the "Map") is intended to be used as a guide only, in conjunction with other data sources and methods, and should only be used for the purpose for which it was developed. The information shown in this Map is based on a summary of data obtained from various sources. While all reasonable measures have been taken to ensure the accuracy of the Map, MPI: (a) gives no warranty or representation in relation to the accuracy, completeness, reliability or fitness for purpose of the Map; and (b) accepts no liability whatsoever in relation to any loss, damage or other costs relating to any person's use of the Map, including but not limited to any compilations, derivative works or modifications of the Map. © Crown copyright. This map is subject to Crown copyright administered by Ministry for Primary Industries (MPI), and is licensed for general use under the Creative Commons Attribution 3.0 New Zealand licence (<http://creativecommons.org/licenses/by/3.0/nz/>). Some data sourced from Land Information New Zealand.

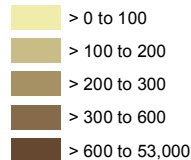


Disclaimer: This map and all information accompanying it (the "Map") is intended to be used as a guide only, in conjunction with other data sources and methods, and should only be used for the purpose for which it was developed. The information shown in this Map is based on a summary of data obtained from various sources. While all reasonable measures have been taken to ensure the accuracy of the Map, MPI: (a) gives no warranty or representation in relation to the accuracy, completeness, reliability or fitness for purpose of the Map; and (b) accepts no liability whatsoever in relation to any loss, damage or other costs relating to any person's use of the Map, including but not limited to any compilations, derivative works or modifications of the Map. © Crown copyright. This map is subject to Crown copyright administered by Ministry for Primary Industries (MPI), and is licensed for general use under the Creative Commons Attribution 3.0 New Zealand licence (<http://creativecommons.org/licenses/by/3.0/nz/>). Some data sourced from Land Information New Zealand.



Disclaimer: This map and all information accompanying it (the "Map") is intended to be used as a guide only, in conjunction with other data sources and methods, and should only be used for the purpose for which it was developed. The information shown in this Map is based on a summary of data obtained from various sources. While all reasonable measures have been taken to ensure the accuracy of the Map, MPI: (a) gives no warranty or representation in relation to the accuracy, completeness, reliability or fitness for purpose of the Map; and (b) accepts no liability whatsoever in relation to any loss, damage or other costs relating to any person's use of the Map, including but not limited to any compilations, derivative works or modifications of the Map. © Crown copyright. This map is subject to Crown copyright administered by Ministry for Primary Industries (MPI), and is licensed for general use under the Creative Commons Attribution 3.0 New Zealand licence (<http://creativecommons.org/licenses/by/3.0/nz/>). Some data sourced from Land Information New Zealand.

Average annual set net catch (kg)



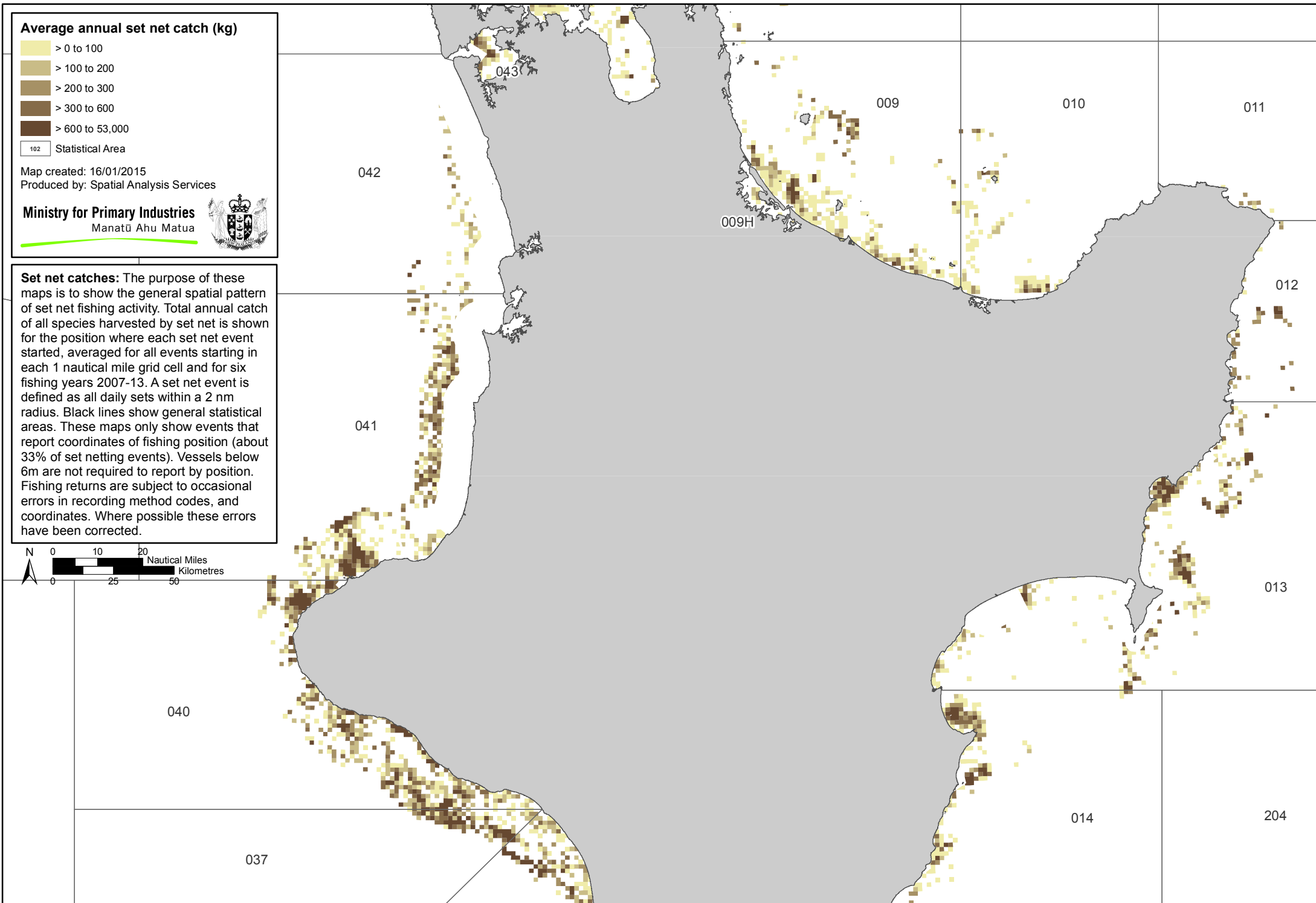
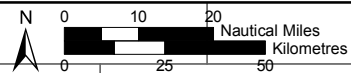
102 Statistical Area

Map created: 16/01/2015
Produced by: Spatial Analysis Services

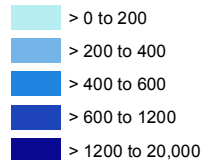
Ministry for Primary Industries
Manatū Ahu Matua



Set net catches: The purpose of these maps is to show the general spatial pattern of set net fishing activity. Total annual catch of all species harvested by set net is shown for the position where each set net event started, averaged for all events starting in each 1 nautical mile grid cell and for six fishing years 2007-13. A set net event is defined as all daily sets within a 2 nm radius. Black lines show general statistical areas. These maps only show events that report coordinates of fishing position (about 33% of set netting events). Vessels below 6m are not required to report by position. Fishing returns are subject to occasional errors in recording method codes, and coordinates. Where possible these errors have been corrected.



Average set net catch per event (kg)



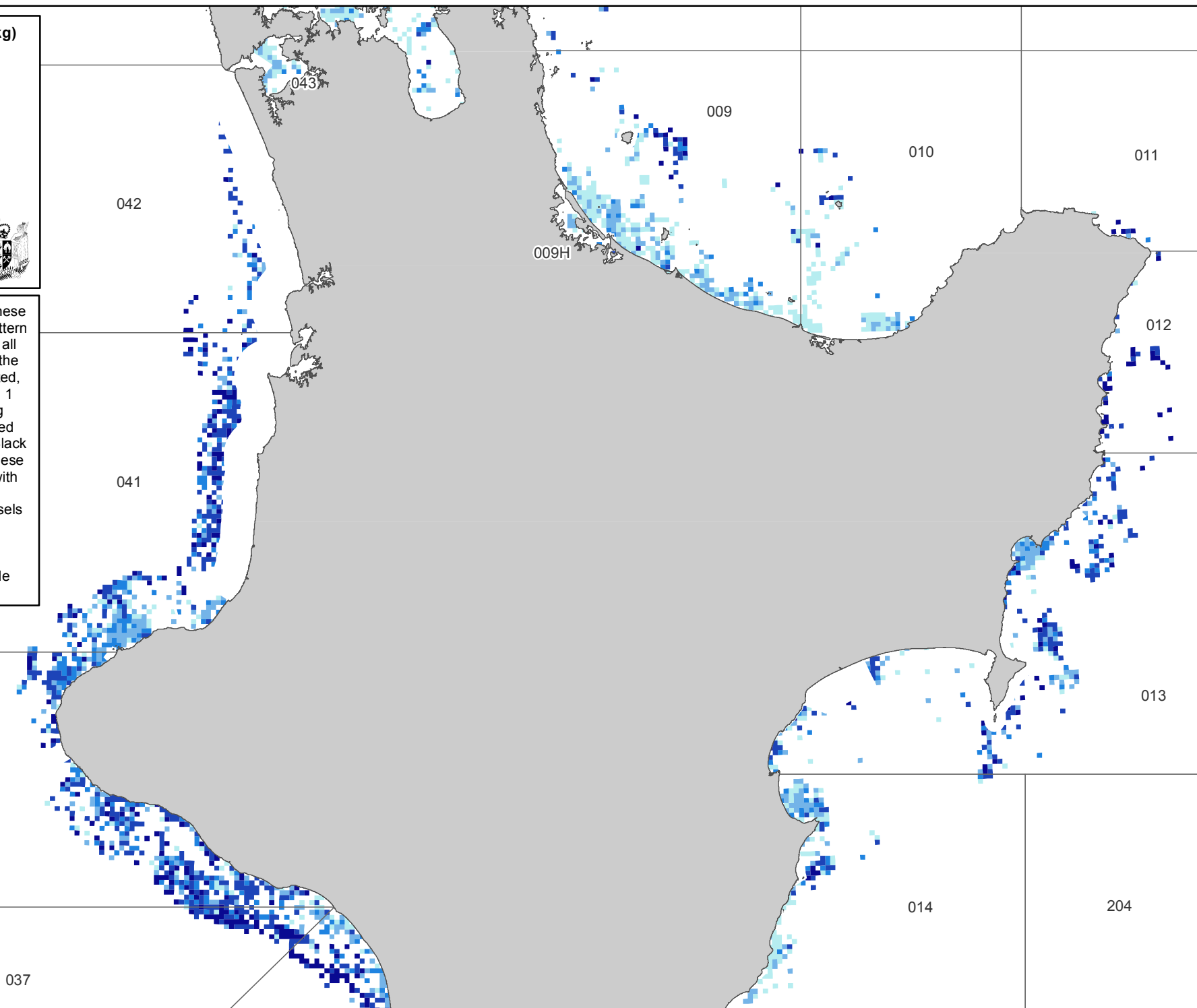
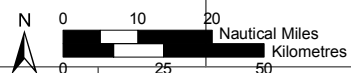
102 Statistical Area

Map created: 16/01/2015
Produced by: Spatial Analysis Services

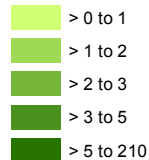
Ministry for Primary Industries
Manatū Ahu Matua



Set net catch rates: The purpose of these maps is to show the general spatial pattern of set net fishing activity. Total catch of all species per set net event is shown for the position where each set net event started, averaged for all events starting in each 1 nautical mile grid cell and for six fishing years 2007-13. A set net event is defined as all daily sets within a 2 nm radius. Black lines show general statistical areas. These maps show only those fishing events with reported coordinates of fishing position (about 33% of set netting events). Vessels below 6m are not required to report by position. Fishing returns are subject to occasional errors in recording method codes, and coordinates. Where possible these errors have been corrected.



Average annual no. of setnet events



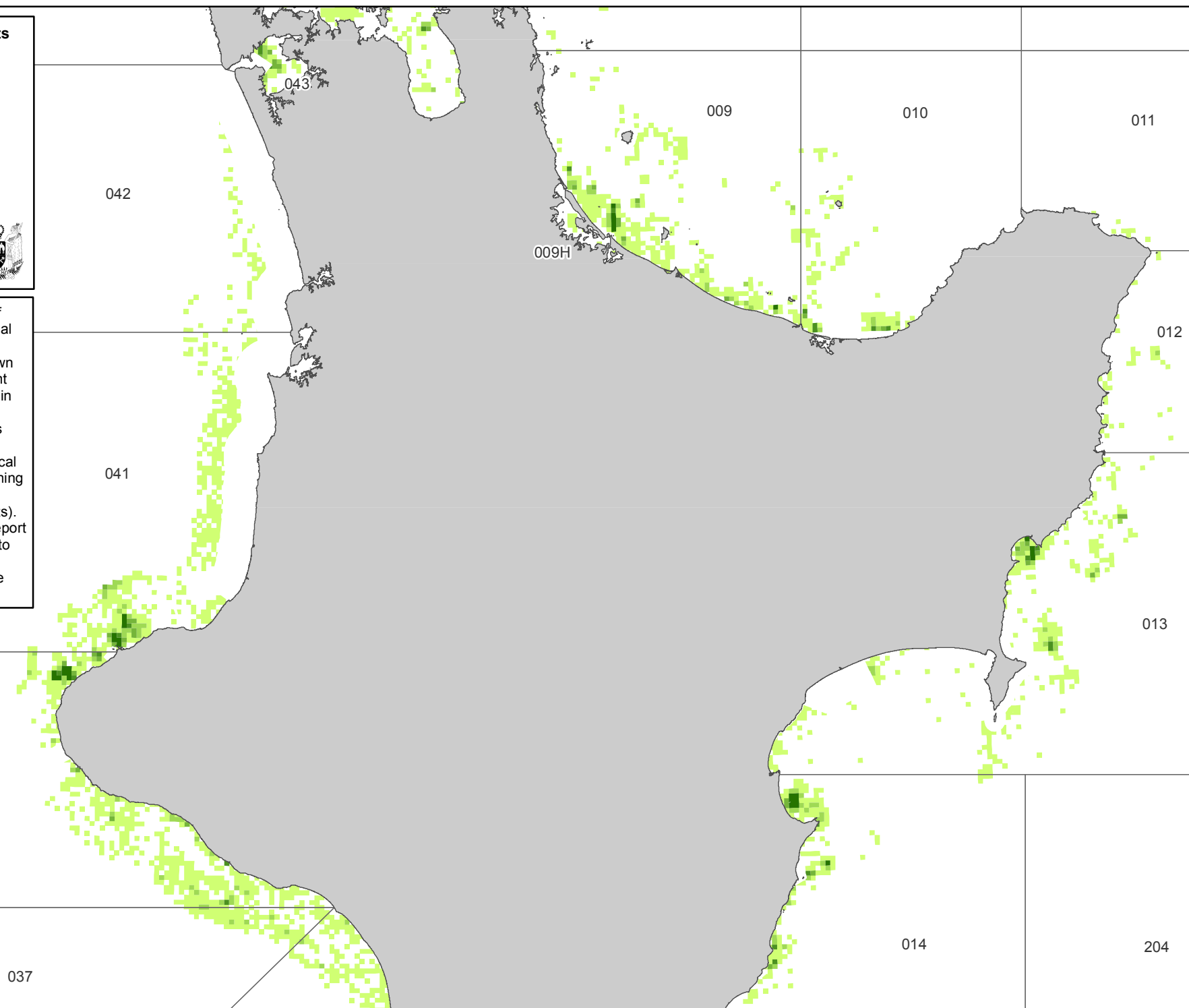
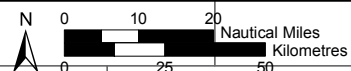
102 Statistical Area

Map created: 16/01/2015
Produced by: Spatial Analysis Services

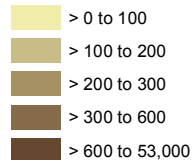
Ministry for Primary Industries
Manatū Ahu Matua



Set net fishing events: The purpose of these maps is to show the general spatial pattern of set net fishing activity. The annual number of set net events is shown for the position where each set net event started, averaged for all events starting in each 1 nautical mile grid cell and for six fishing years 2007-13. A set net event is defined as all daily sets within a 2 nm radius. Black lines show general statistical areas. These maps show only those fishing events that report coordinates of fishing position (about 33% of set netting events). Vessels below 6m are not required to report by position. Fishing returns are subject to occasional errors in recording method codes, and coordinates. Where possible these errors have been corrected.



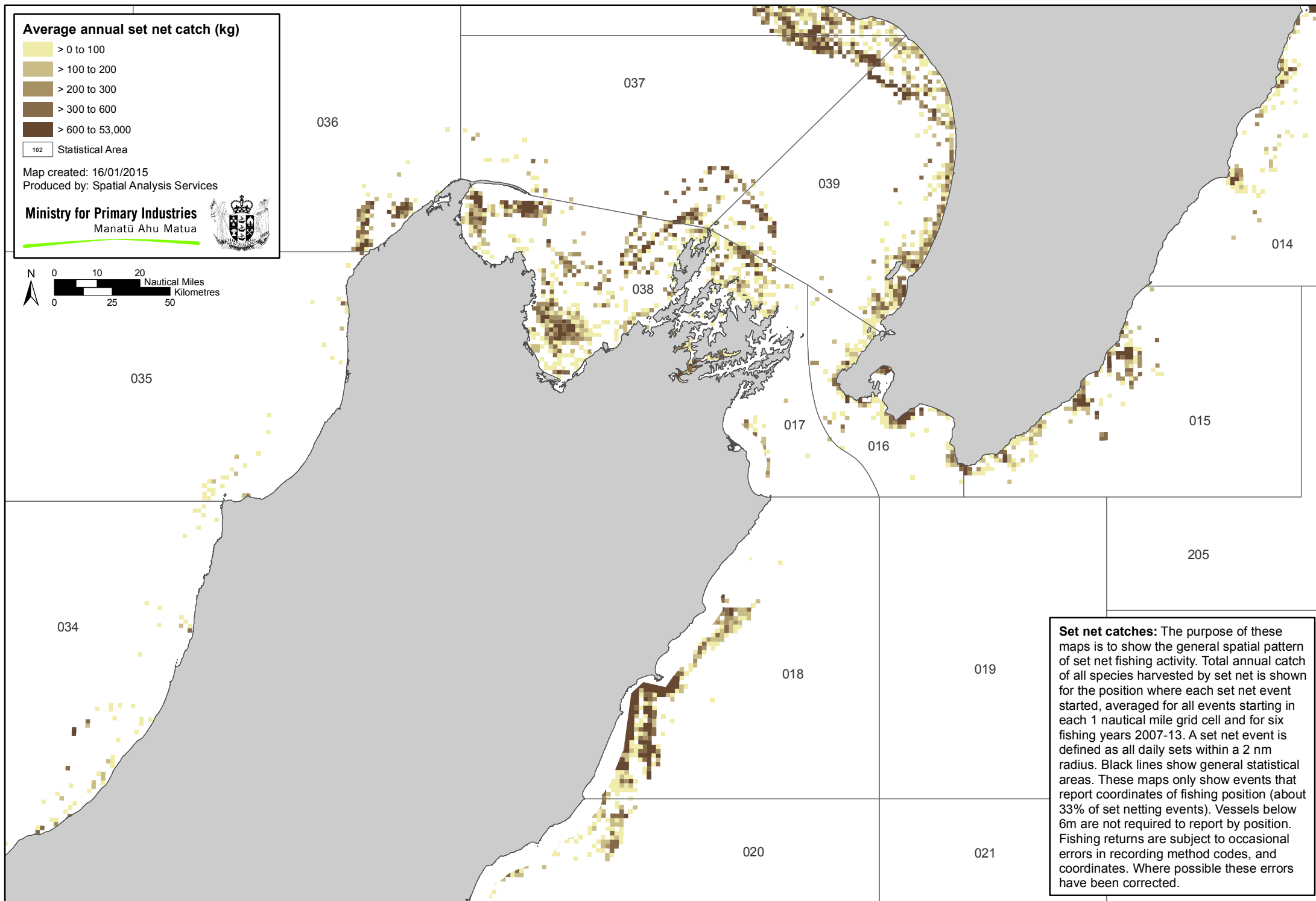
Average annual set net catch (kg)



102 Statistical Area

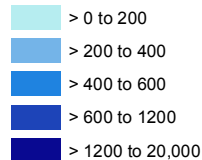
Map created: 16/01/2015
Produced by: Spatial Analysis Services

Ministry for Primary Industries
Manatū Ahu Matua



Set net catches: The purpose of these maps is to show the general spatial pattern of set net fishing activity. Total annual catch of all species harvested by set net is shown for the position where each set net event started, averaged for all events starting in each 1 nautical mile grid cell and for six fishing years 2007-13. A set net event is defined as all daily sets within a 2 nm radius. Black lines show general statistical areas. These maps only show events that report coordinates of fishing position (about 33% of set netting events). Vessels below 6m are not required to report by position. Fishing returns are subject to occasional errors in recording method codes, and coordinates. Where possible these errors have been corrected.

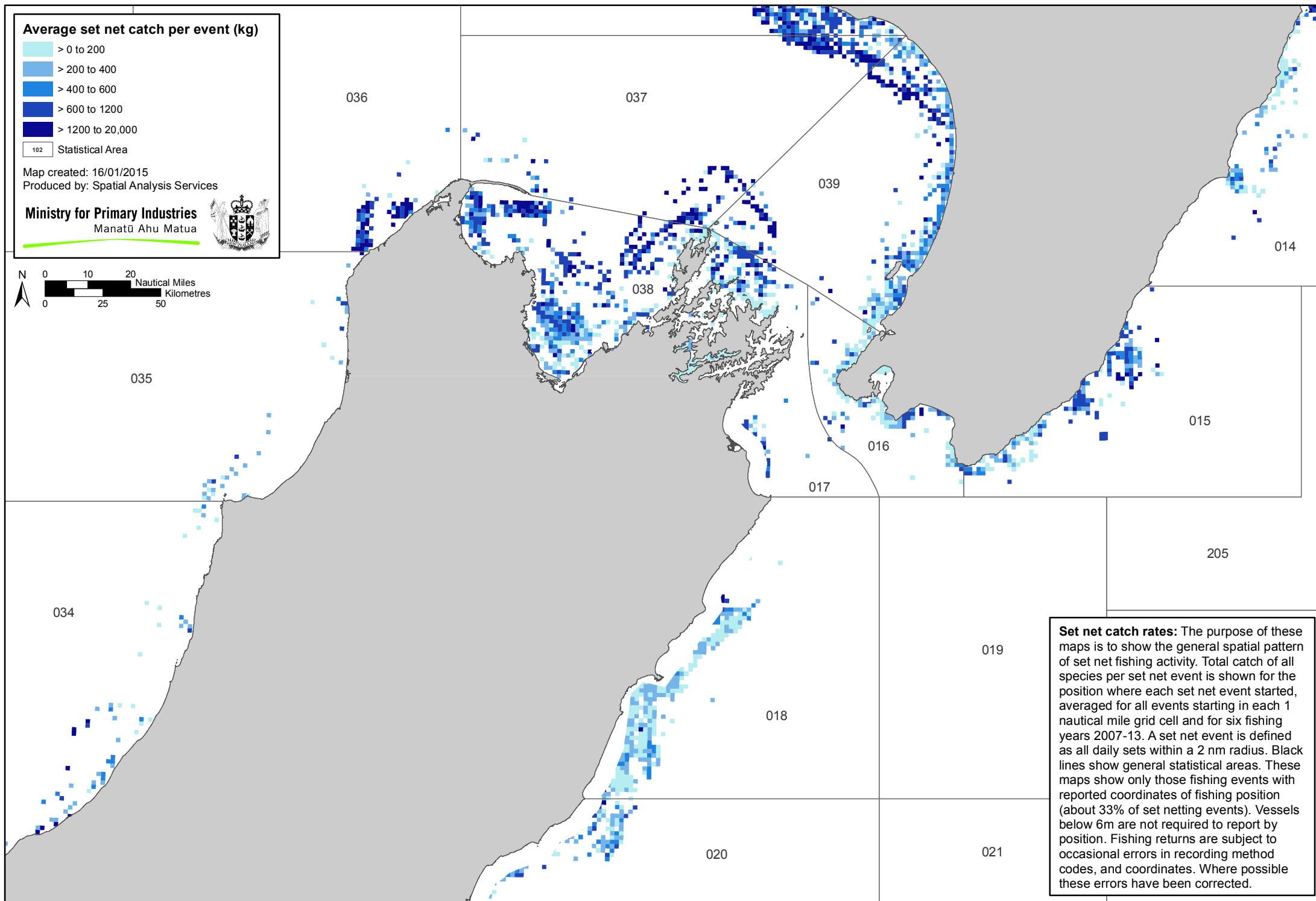
Average set net catch per event (kg)



102 Statistical Area

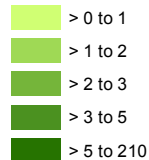
Map created: 16/01/2015
Produced by: Spatial Analysis Services

Ministry for Primary Industries
Manatū Ahu Matua



Set net catch rates: The purpose of these maps is to show the general spatial pattern of set net fishing activity. Total catch of all species per set net event is shown for the position where each set net event started, averaged for all events starting in each 1 nautical mile grid cell and for six fishing years 2007-13. A set net event is defined as all daily sets within a 2 nm radius. Black lines show general statistical areas. These maps show only those fishing events with reported coordinates of fishing position (about 33% of set netting events). Vessels below 6m are not required to report by position. Fishing returns are subject to occasional errors in recording method codes, and coordinates. Where possible these errors have been corrected.

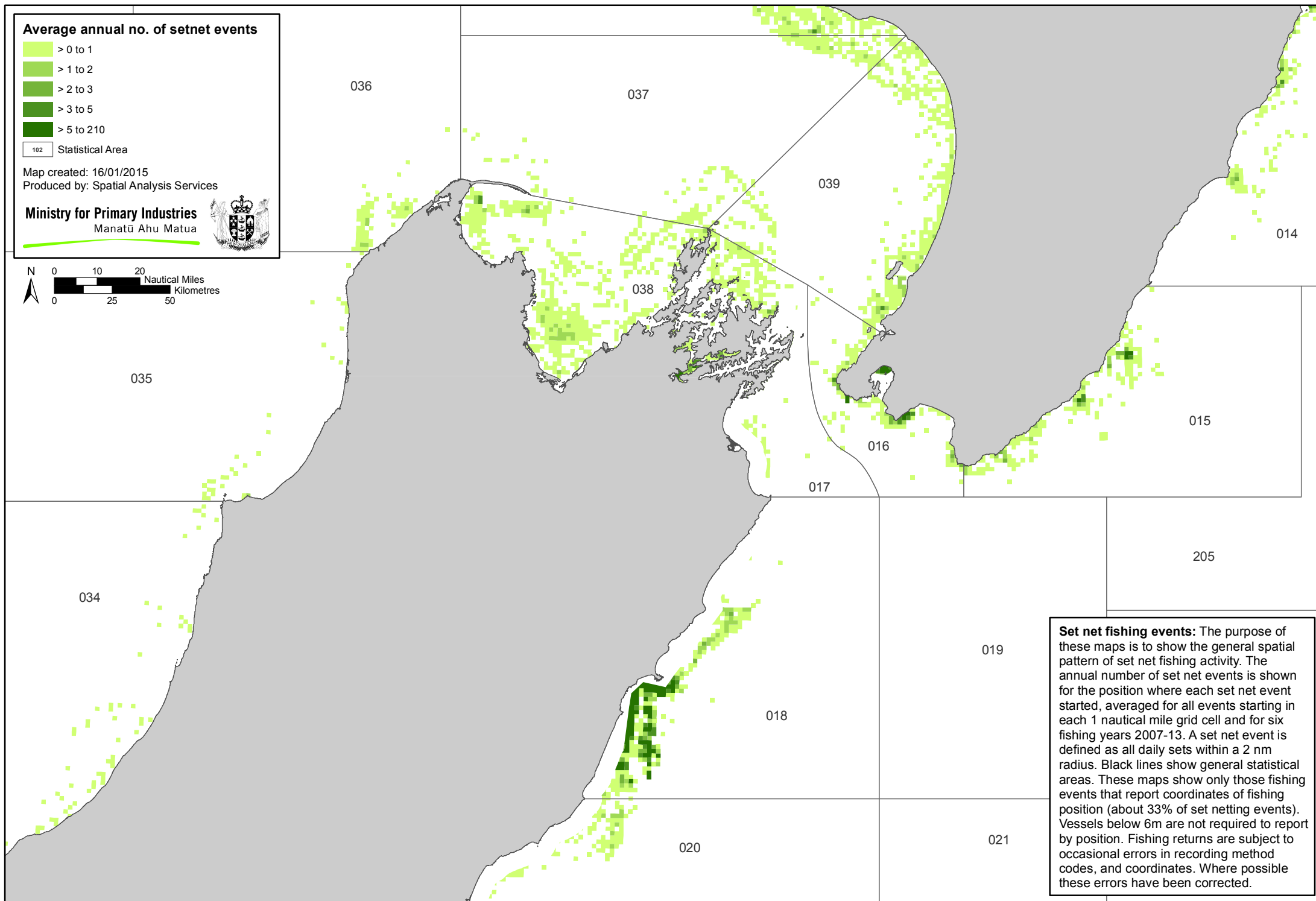
Average annual no. of setnet events



102 Statistical Area

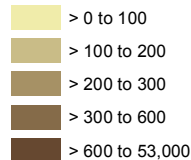
Map created: 16/01/2015
Produced by: Spatial Analysis Services

Ministry for Primary Industries
Manatū Ahu Matua



Set net fishing events: The purpose of these maps is to show the general spatial pattern of set net fishing activity. The annual number of set net events is shown for the position where each set net event started, averaged for all events starting in each 1 nautical mile grid cell and for six fishing years 2007-13. A set net event is defined as all daily sets within a 2 nm radius. Black lines show general statistical areas. These maps show only those fishing events that report coordinates of fishing position (about 33% of set netting events). Vessels below 6m are not required to report by position. Fishing returns are subject to occasional errors in recording method codes, and coordinates. Where possible these errors have been corrected.

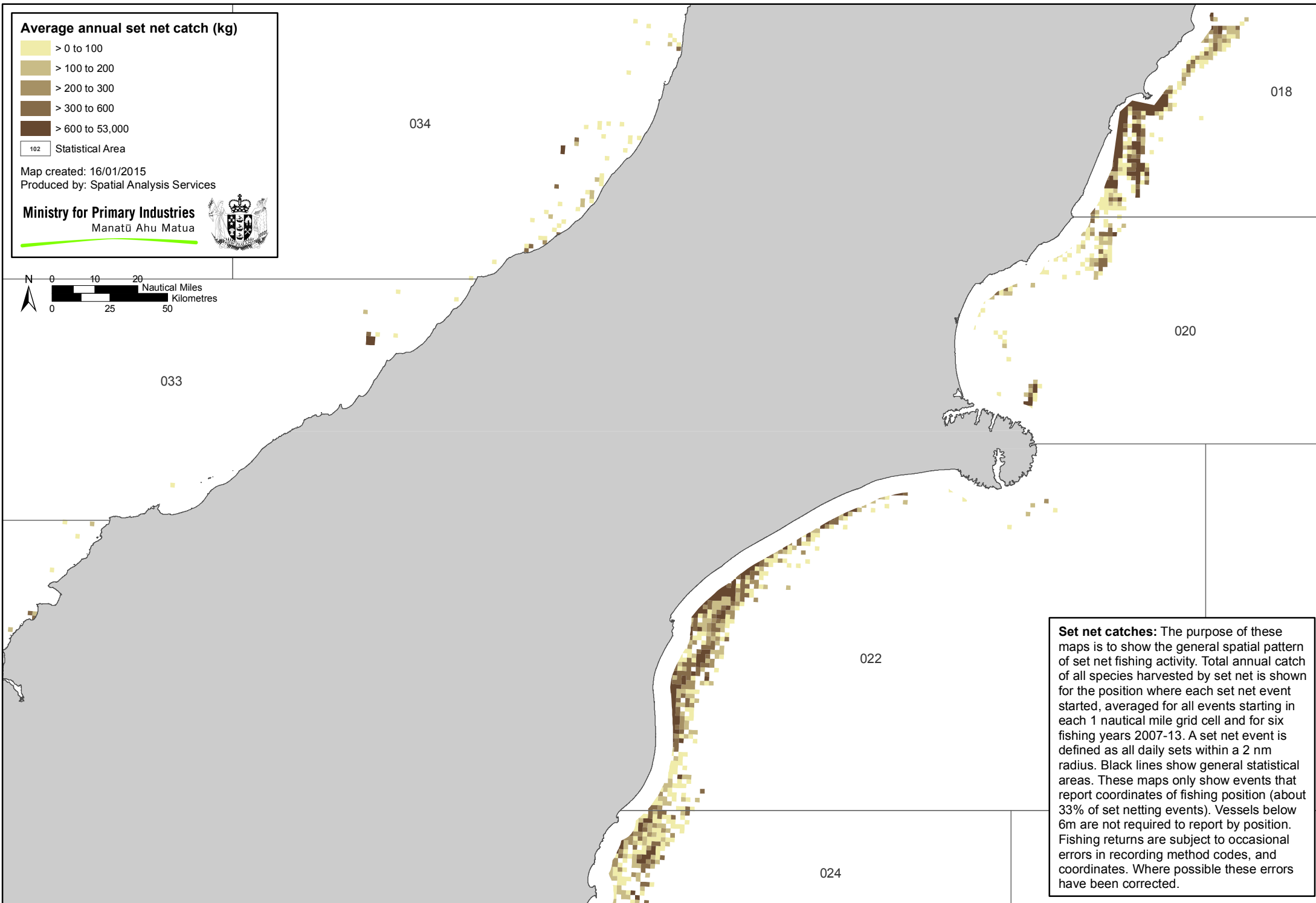
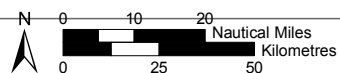
Average annual set net catch (kg)



102 Statistical Area

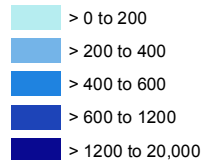
Map created: 16/01/2015
Produced by: Spatial Analysis Services

Ministry for Primary Industries
Manatū Ahu Matua



Set net catches: The purpose of these maps is to show the general spatial pattern of set net fishing activity. Total annual catch of all species harvested by set net is shown for the position where each set net event started, averaged for all events starting in each 1 nautical mile grid cell and for six fishing years 2007-13. A set net event is defined as all daily sets within a 2 nm radius. Black lines show general statistical areas. These maps only show events that report coordinates of fishing position (about 33% of set netting events). Vessels below 6m are not required to report by position. Fishing returns are subject to occasional errors in recording method codes, and coordinates. Where possible these errors have been corrected.

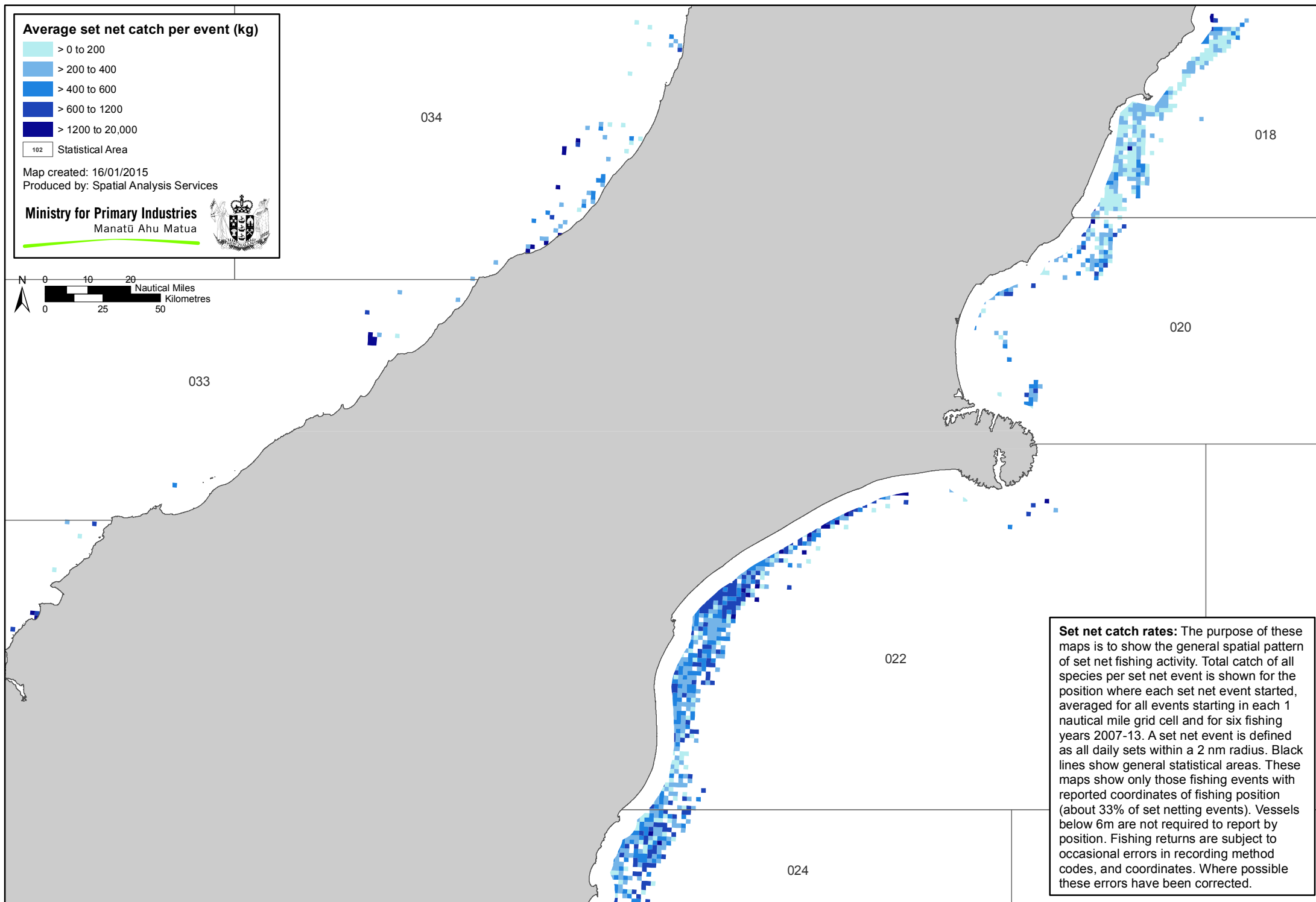
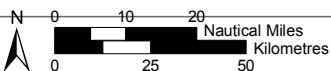
Average set net catch per event (kg)



102 Statistical Area

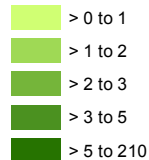
Map created: 16/01/2015
Produced by: Spatial Analysis Services

Ministry for Primary Industries
Manatū Ahu Matua



Set net catch rates: The purpose of these maps is to show the general spatial pattern of set net fishing activity. Total catch of all species per set net event is shown for the position where each set net event started, averaged for all events starting in each 1 nautical mile grid cell and for six fishing years 2007-13. A set net event is defined as all daily sets within a 2 nm radius. Black lines show general statistical areas. These maps show only those fishing events with reported coordinates of fishing position (about 33% of set netting events). Vessels below 6m are not required to report by position. Fishing returns are subject to occasional errors in recording method codes, and coordinates. Where possible these errors have been corrected.

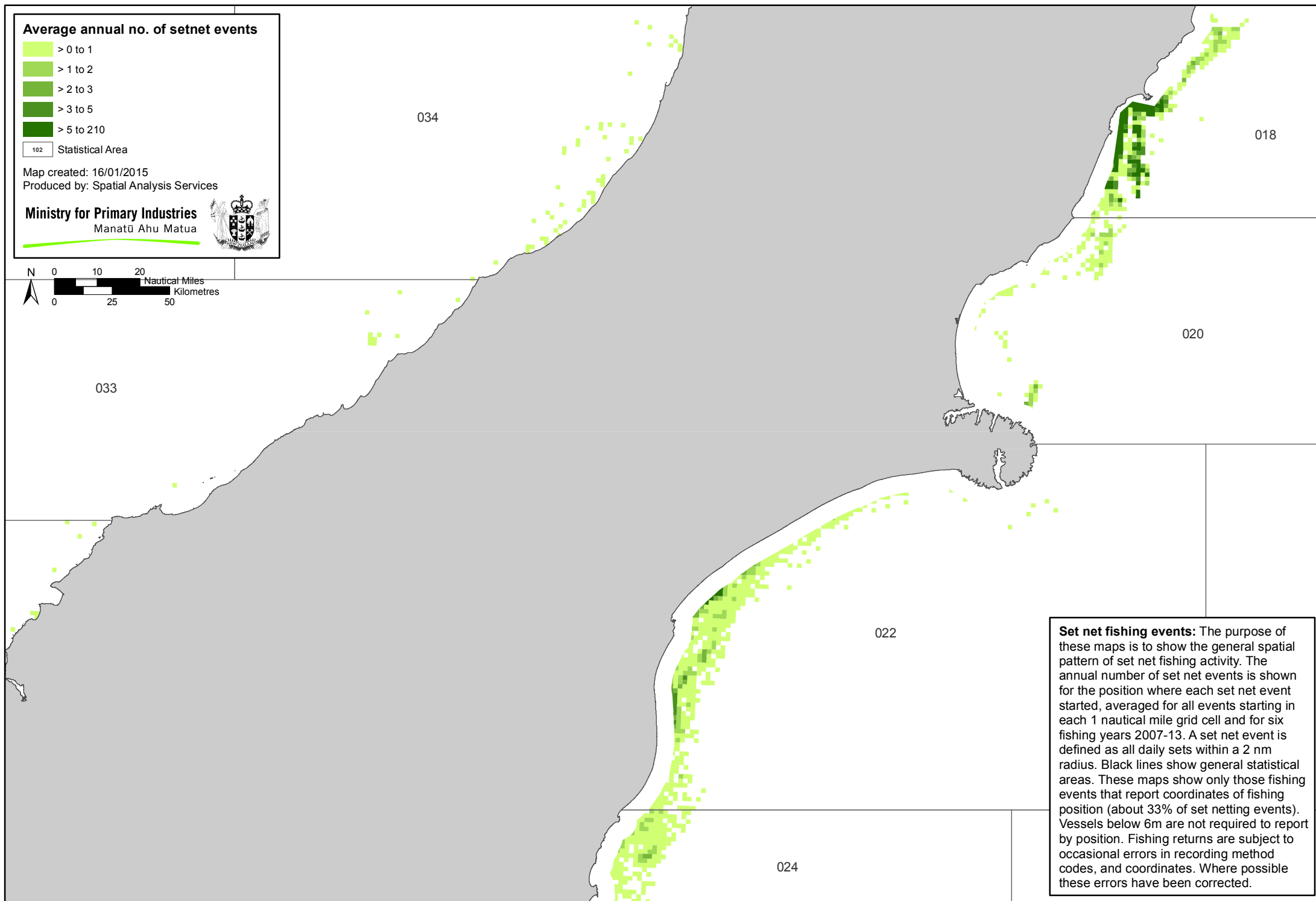
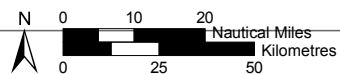
Average annual no. of setnet events



102 Statistical Area

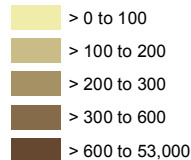
Map created: 16/01/2015
Produced by: Spatial Analysis Services

Ministry for Primary Industries
Manatū Ahu Matua



Set net fishing events: The purpose of these maps is to show the general spatial pattern of set net fishing activity. The annual number of set net events is shown for the position where each set net event started, averaged for all events starting in each 1 nautical mile grid cell and for six fishing years 2007-13. A set net event is defined as all daily sets within a 2 nm radius. Black lines show general statistical areas. These maps show only those fishing events that report coordinates of fishing position (about 33% of set netting events). Vessels below 6m are not required to report by position. Fishing returns are subject to occasional errors in recording method codes, and coordinates. Where possible these errors have been corrected.

Average annual set net catch (kg)



102 Statistical Area

Map created: 16/01/2015
Produced by: Spatial Analysis Services

Ministry for Primary Industries
Manatū Ahu Matua



031

032

022

024

030

026

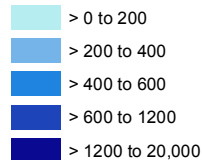
025

029

027

Set net catches: The purpose of these maps is to show the general spatial pattern of set net fishing activity. Total annual catch of all species harvested by set net is shown for the position where each set net event started, averaged for all events starting in each 1 nautical mile grid cell and for six fishing years 2007-13. A set net event is defined as all daily sets within a 2 nm radius. Black lines show general statistical areas. These maps only show events that report coordinates of fishing position (about 33% of set netting events). Vessels below 6m are not required to report by position. Fishing returns are subject to occasional errors in recording method codes, and coordinates. Where possible these errors have been corrected.

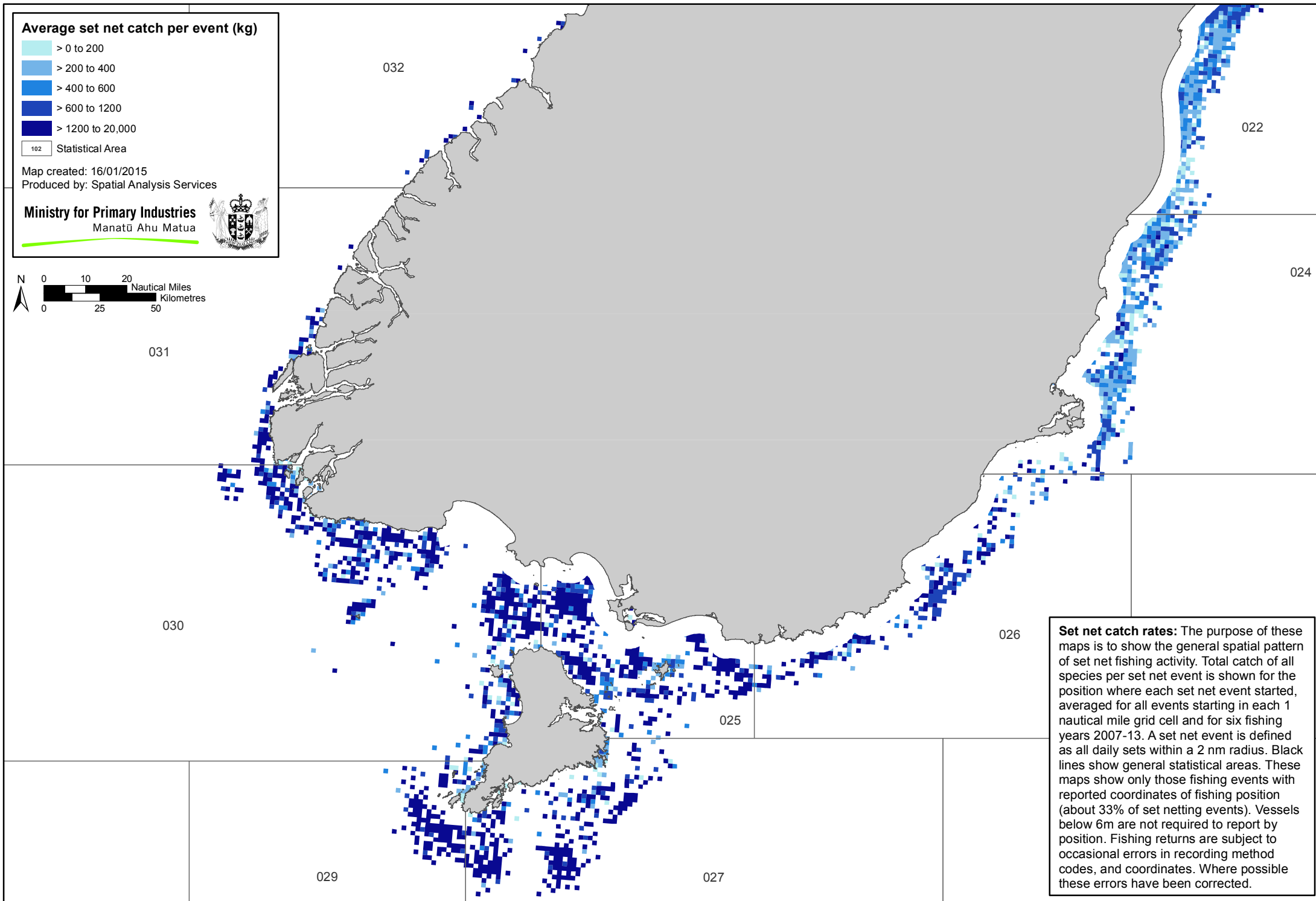
Average set net catch per event (kg)



102 Statistical Area

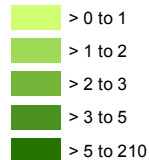
Map created: 16/01/2015
Produced by: Spatial Analysis Services

Ministry for Primary Industries
Manatū Ahu Matua



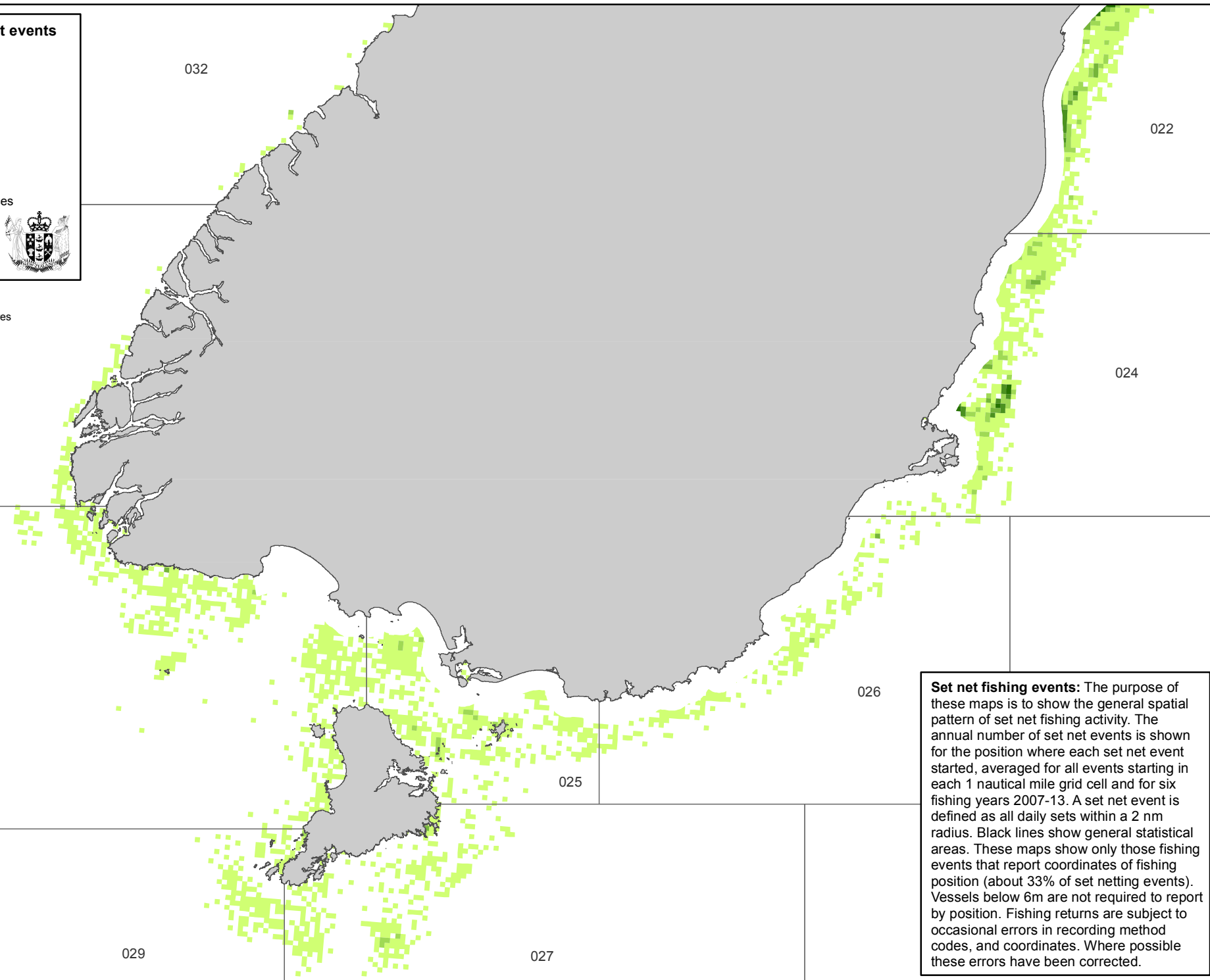
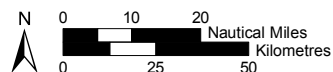
Set net catch rates: The purpose of these maps is to show the general spatial pattern of set net fishing activity. Total catch of all species per set net event is shown for the position where each set net event started, averaged for all events starting in each 1 nautical mile grid cell and for six fishing years 2007-13. A set net event is defined as all daily sets within a 2 nm radius. Black lines show general statistical areas. These maps show only those fishing events with reported coordinates of fishing position (about 33% of set netting events). Vessels below 6m are not required to report by position. Fishing returns are subject to occasional errors in recording method codes, and coordinates. Where possible these errors have been corrected.

Average annual no. of setnet events



Map created: 16/01/2015
Produced by: Spatial Analysis Services

Ministry for Primary Industries
Manatū Ahu Matua



Set net fishing events: The purpose of these maps is to show the general spatial pattern of set net fishing activity. The annual number of set net events is shown for the position where each set net event started, averaged for all events starting in each 1 nautical mile grid cell and for six fishing years 2007-13. A set net event is defined as all daily sets within a 2 nm radius. Black lines show general statistical areas. These maps show only those fishing events that report coordinates of fishing position (about 33% of set netting events). Vessels below 6m are not required to report by position. Fishing returns are subject to occasional errors in recording method codes, and coordinates. Where possible these errors have been corrected.