

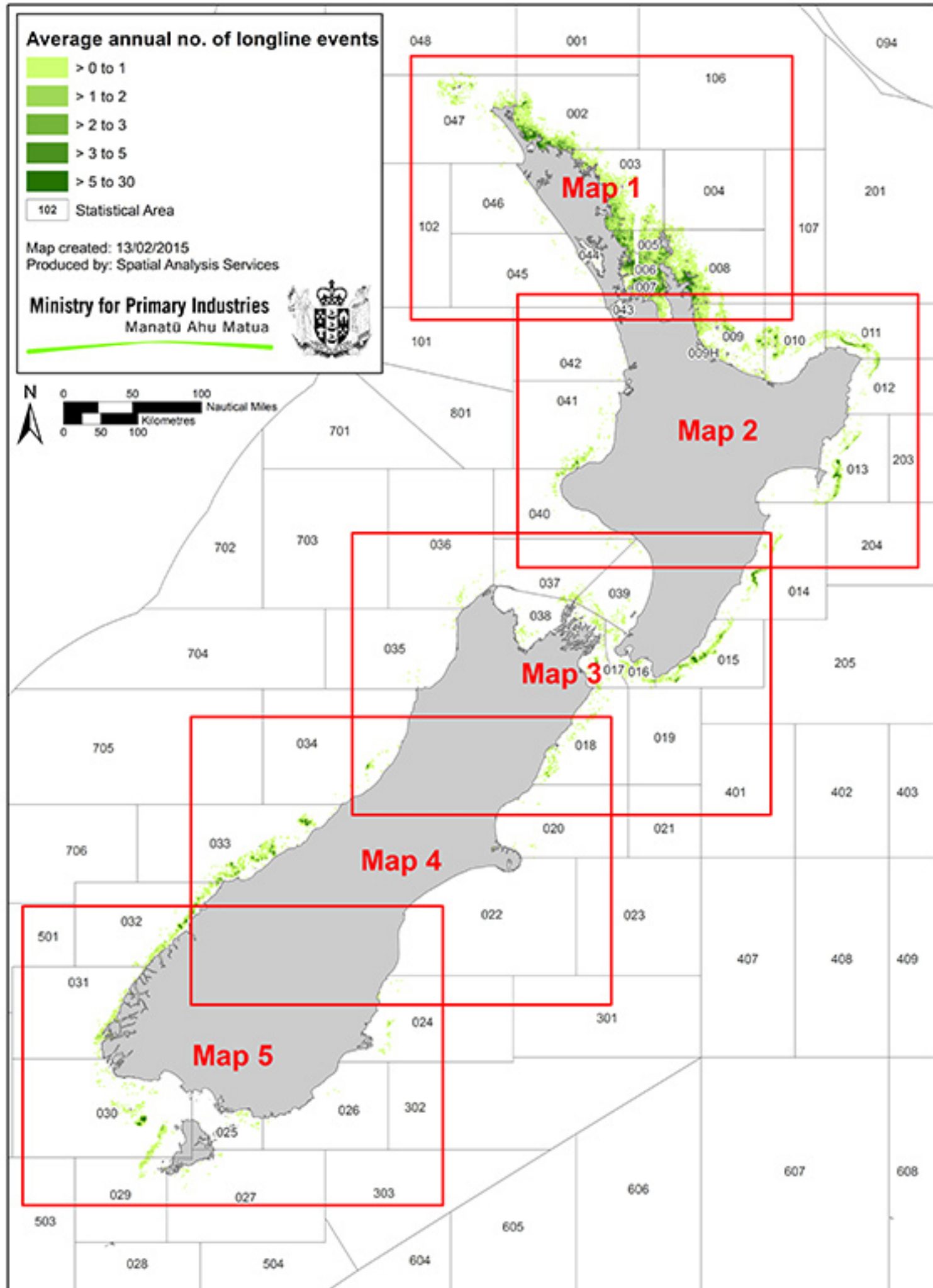
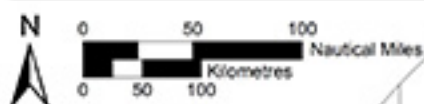
# Average annual no. of longline events

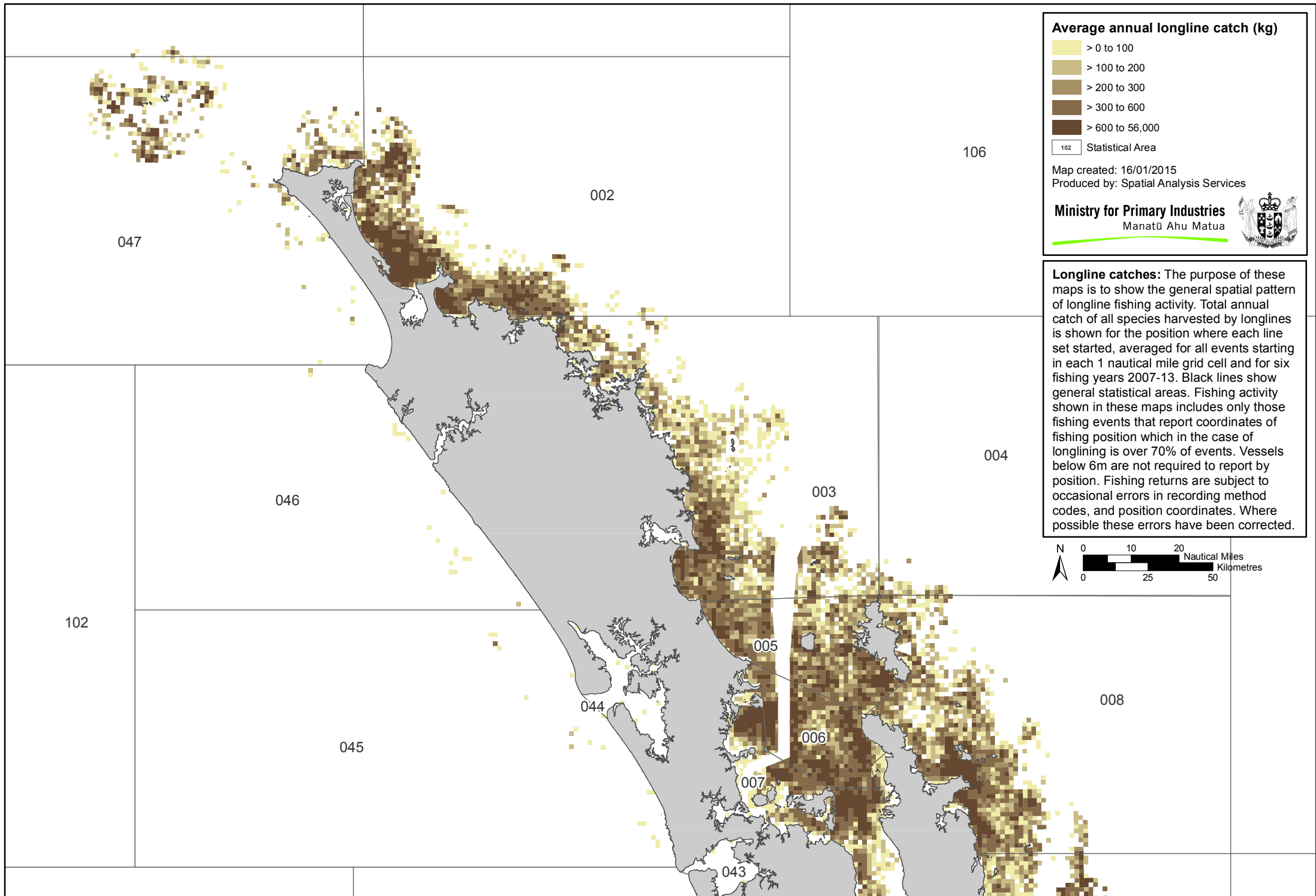


102 Statistical Area

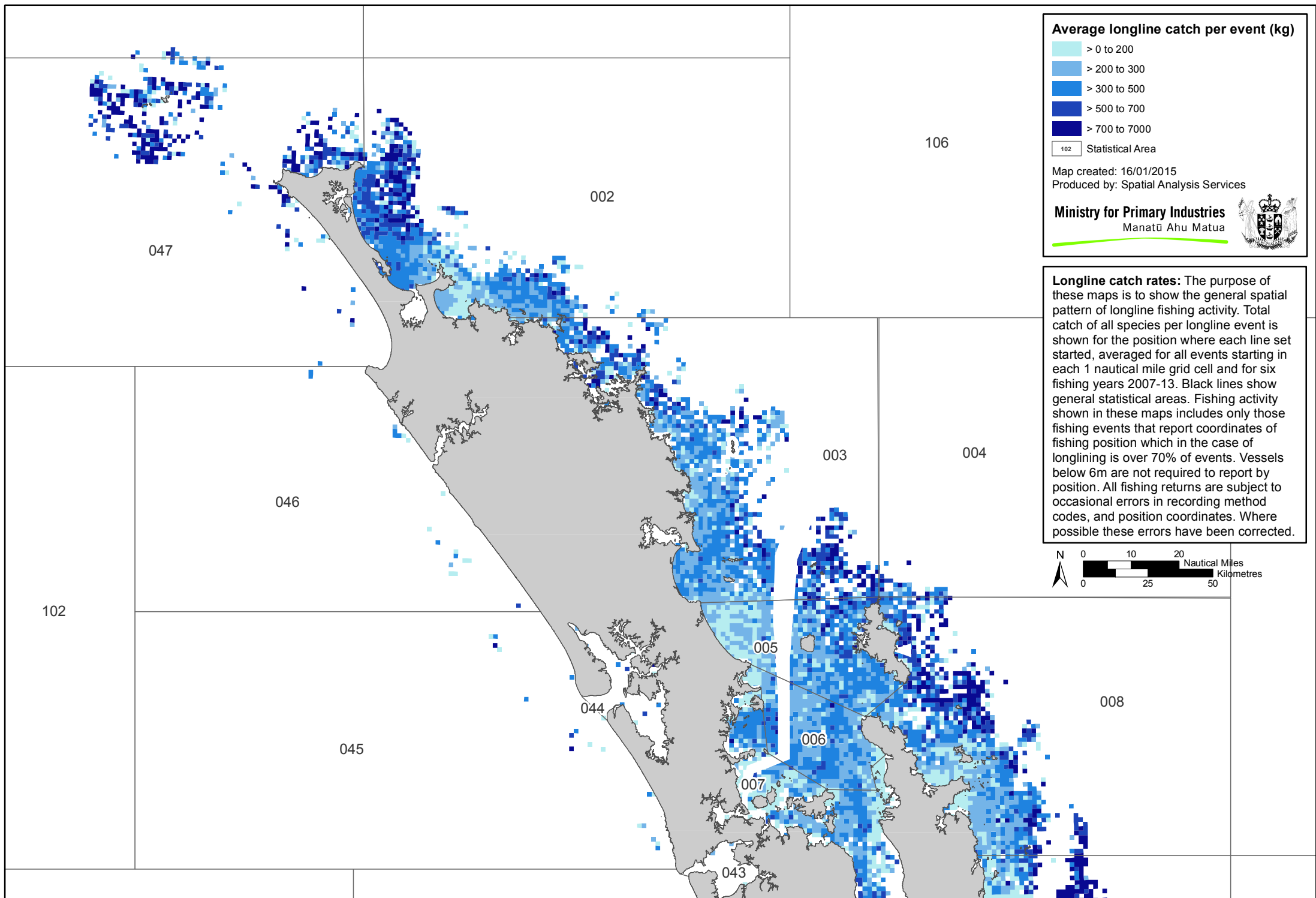
Map created: 13/02/2015  
Produced by: Spatial Analysis Services

Ministry for Primary Industries  
Manatū Ahu Matua

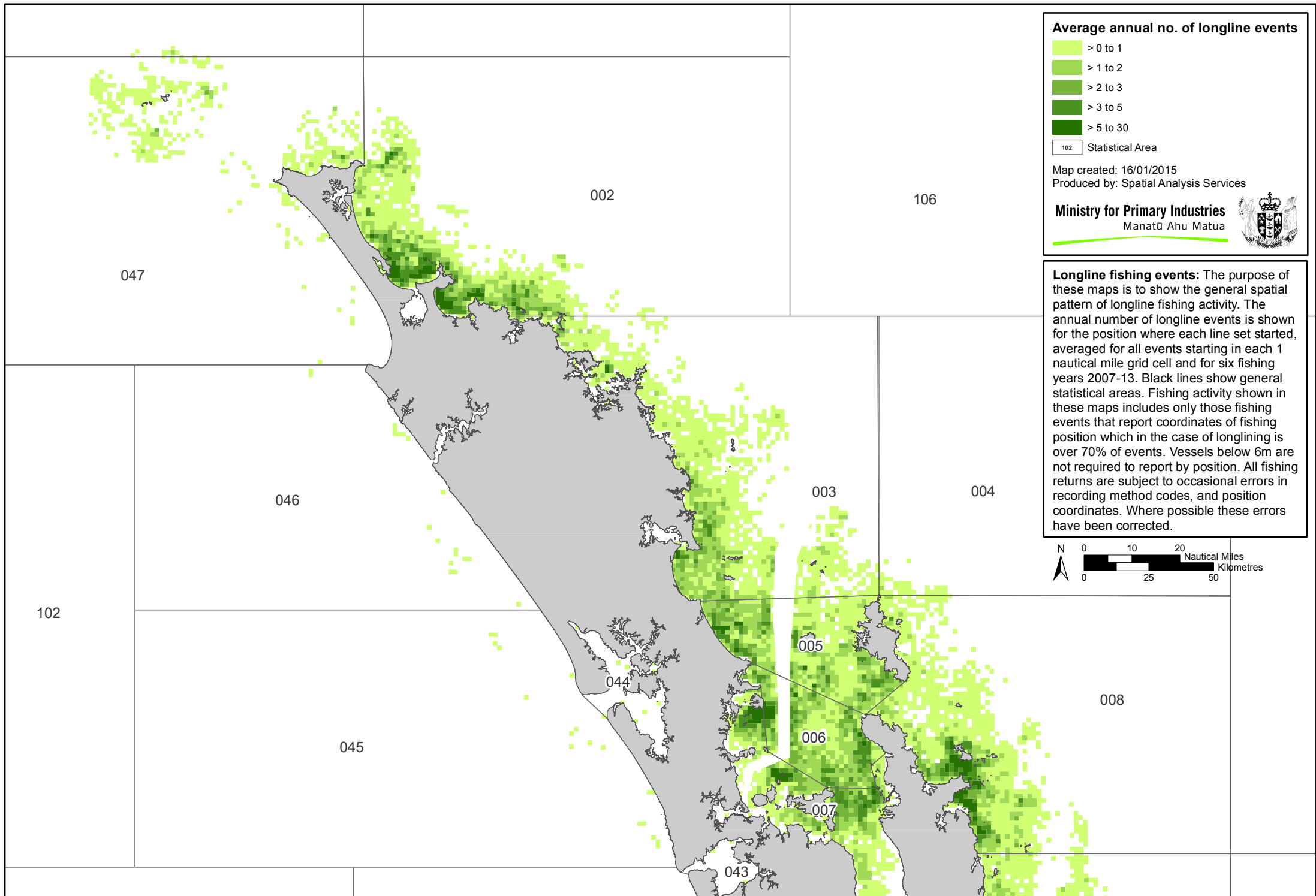




Disclaimer: This map and all information accompanying it (the "Map") is intended to be used as a guide only, in conjunction with other data sources and methods, and should only be used for the purpose for which it was developed. The information shown in this Map is based on a summary of data obtained from various sources. While all reasonable measures have been taken to ensure the accuracy of the Map, MPI: (a) gives no warranty or representation in relation to the accuracy, completeness, reliability or fitness for purpose of the Map; and (b) accepts no liability whatsoever in relation to any loss, damage or other costs relating to any person's use of the Map, including but not limited to any compilations, derivative works or modifications of the Map. © Crown copyright. This map is subject to Crown copyright administered by Ministry for Primary Industries (MPI), and is licensed for general use under the Creative Commons Attribution 3.0 New Zealand licence (<http://creativecommons.org/licenses/by/3.0/nz/>). Some data sourced from Land Information New Zealand.

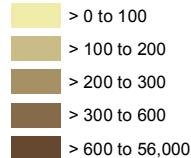


Disclaimer: This map and all information accompanying it (the "Map") is intended to be used as a guide only, in conjunction with other data sources and methods, and should only be used for the purpose for which it was developed. The information shown in this Map is based on a summary of data obtained from various sources. While all reasonable measures have been taken to ensure the accuracy of the Map, MPI: (a) gives no warranty or representation in relation to the accuracy, completeness, reliability or fitness for purpose of the Map; and (b) accepts no liability whatsoever in relation to any loss, damage or other costs relating to any person's use of the Map, including but not limited to any compilations, derivative works or modifications of the Map. © Crown copyright. This map is subject to Crown copyright administered by Ministry for Primary Industries (MPI), and is licensed for general use under the Creative Commons Attribution 3.0 New Zealand licence (<http://creativecommons.org/licenses/by/3.0/nz/>). Some data sourced from Land Information New Zealand.



Disclaimer: This map and all information accompanying it (the "Map") is intended to be used as a guide only, in conjunction with other data sources and methods, and should only be used for the purpose for which it was developed. The information shown in this Map is based on a summary of data obtained from various sources. While all reasonable measures have been taken to ensure the accuracy of the Map, MPI: (a) gives no warranty or representation in relation to the accuracy, completeness, reliability or fitness for purpose of the Map; and (b) accepts no liability whatsoever in relation to any loss, damage or other costs relating to any person's use of the Map, including but not limited to any compilations, derivative works or modifications of the Map. © Crown copyright. This map is subject to Crown copyright administered by Ministry for Primary Industries (MPI), and is licensed for general use under the Creative Commons Attribution 3.0 New Zealand licence (<http://creativecommons.org/licenses/by/3.0/nz/>). Some data sourced from Land Information New Zealand.

# Average annual longline catch (kg)



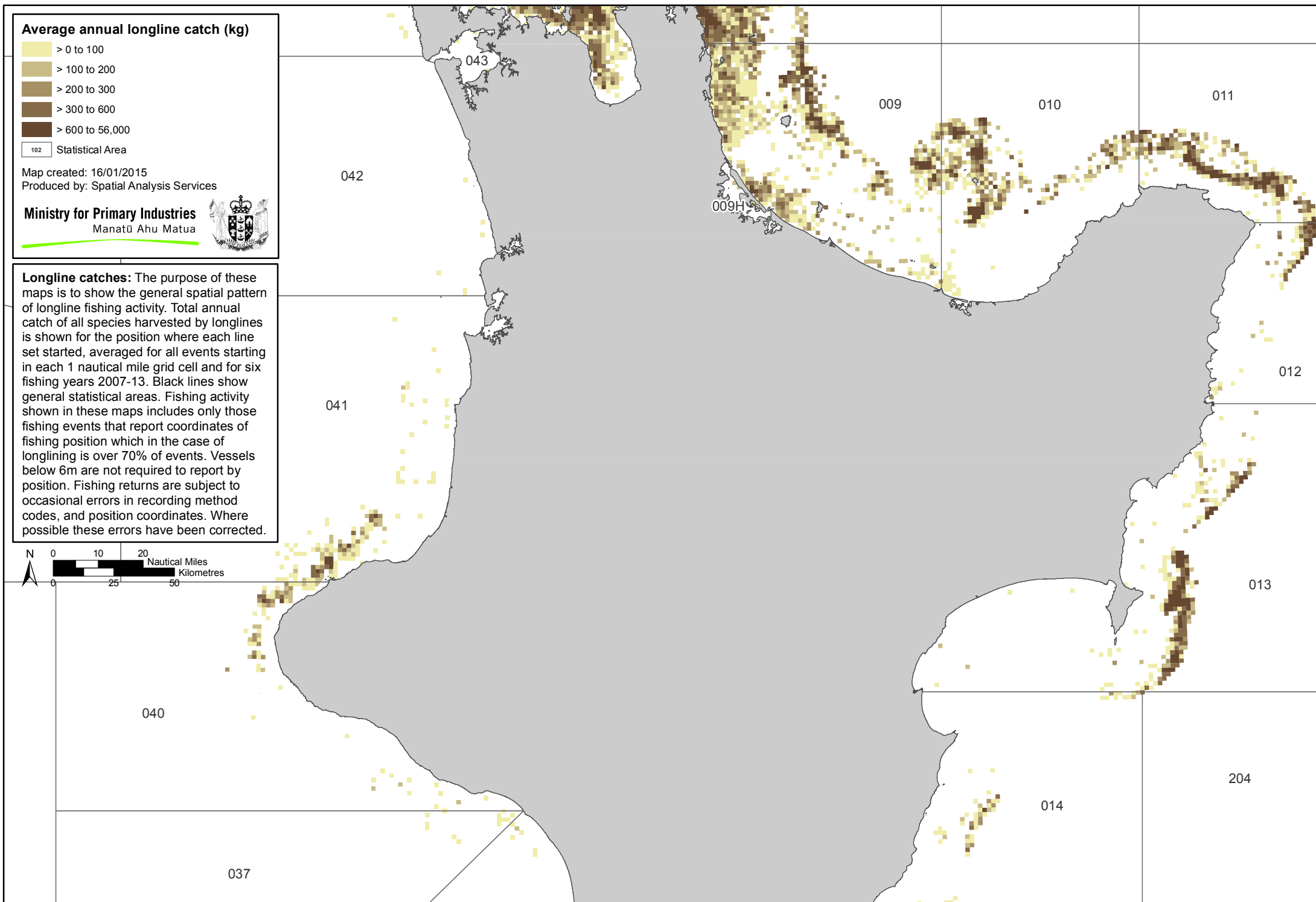
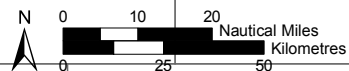
102 Statistical Area

Map created: 16/01/2015  
Produced by: Spatial Analysis Services

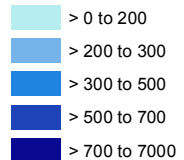
Ministry for Primary Industries  
Manatū Ahu Matua



**Longline catches:** The purpose of these maps is to show the general spatial pattern of longline fishing activity. Total annual catch of all species harvested by longlines is shown for the position where each line set started, averaged for all events starting in each 1 nautical mile grid cell and for six fishing years 2007-13. Black lines show general statistical areas. Fishing activity shown in these maps includes only those fishing events that report coordinates of fishing position which in the case of longlining is over 70% of events. Vessels below 6m are not required to report by position. Fishing returns are subject to occasional errors in recording method codes, and position coordinates. Where possible these errors have been corrected.



# Average longline catch per event (kg)



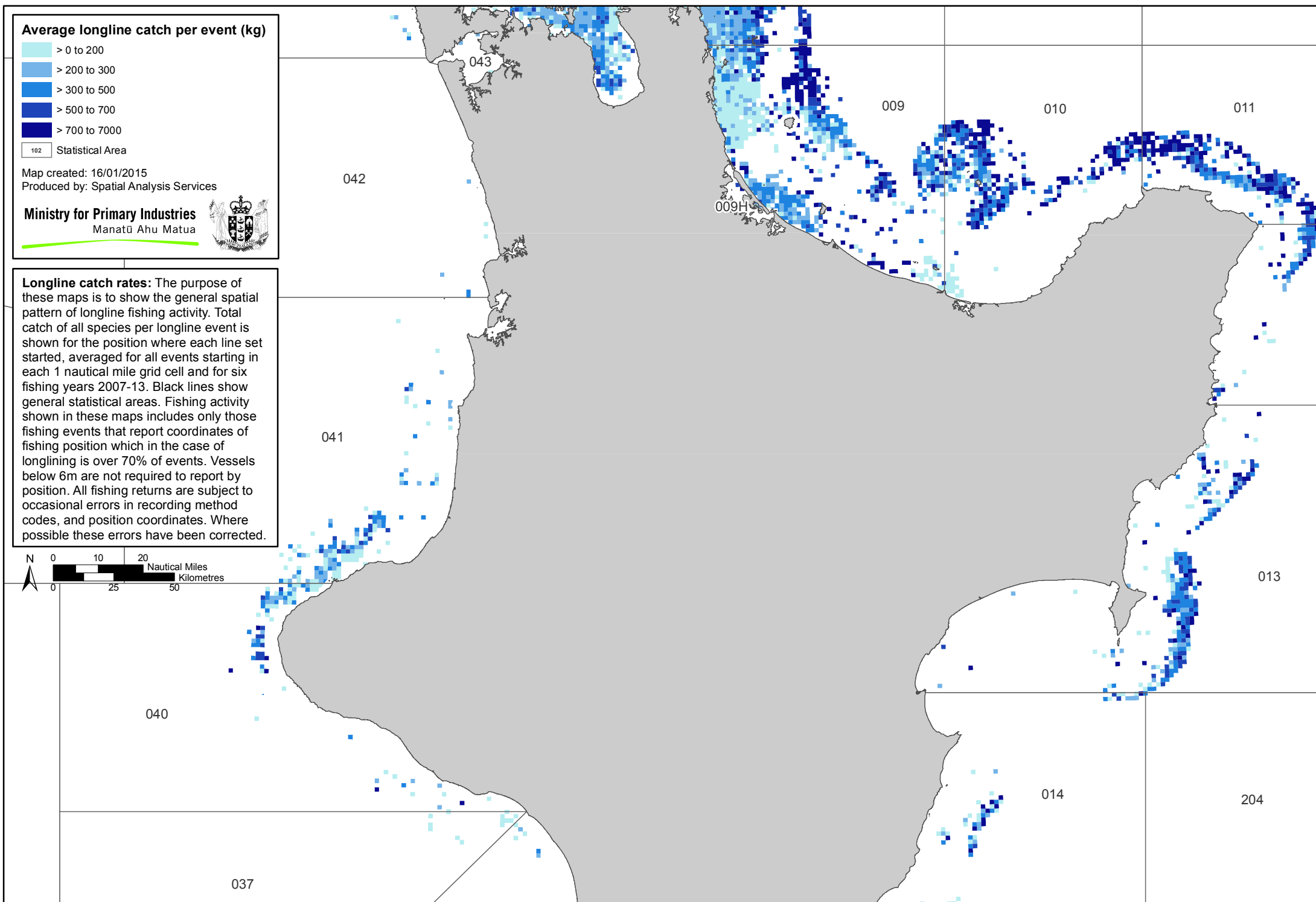
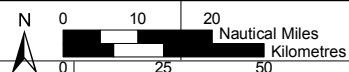
102 Statistical Area

Map created: 16/01/2015  
Produced by: Spatial Analysis Services

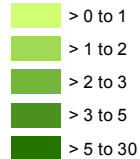
Ministry for Primary Industries  
Manatū Ahu Matua



**Longline catch rates:** The purpose of these maps is to show the general spatial pattern of longline fishing activity. Total catch of all species per longline event is shown for the position where each line set started, averaged for all events starting in each 1 nautical mile grid cell and for six fishing years 2007-13. Black lines show general statistical areas. Fishing activity shown in these maps includes only those fishing events that report coordinates of fishing position which in the case of longlining is over 70% of events. Vessels below 6m are not required to report by position. All fishing returns are subject to occasional errors in recording method codes, and position coordinates. Where possible these errors have been corrected.



# Average annual no. of longline events



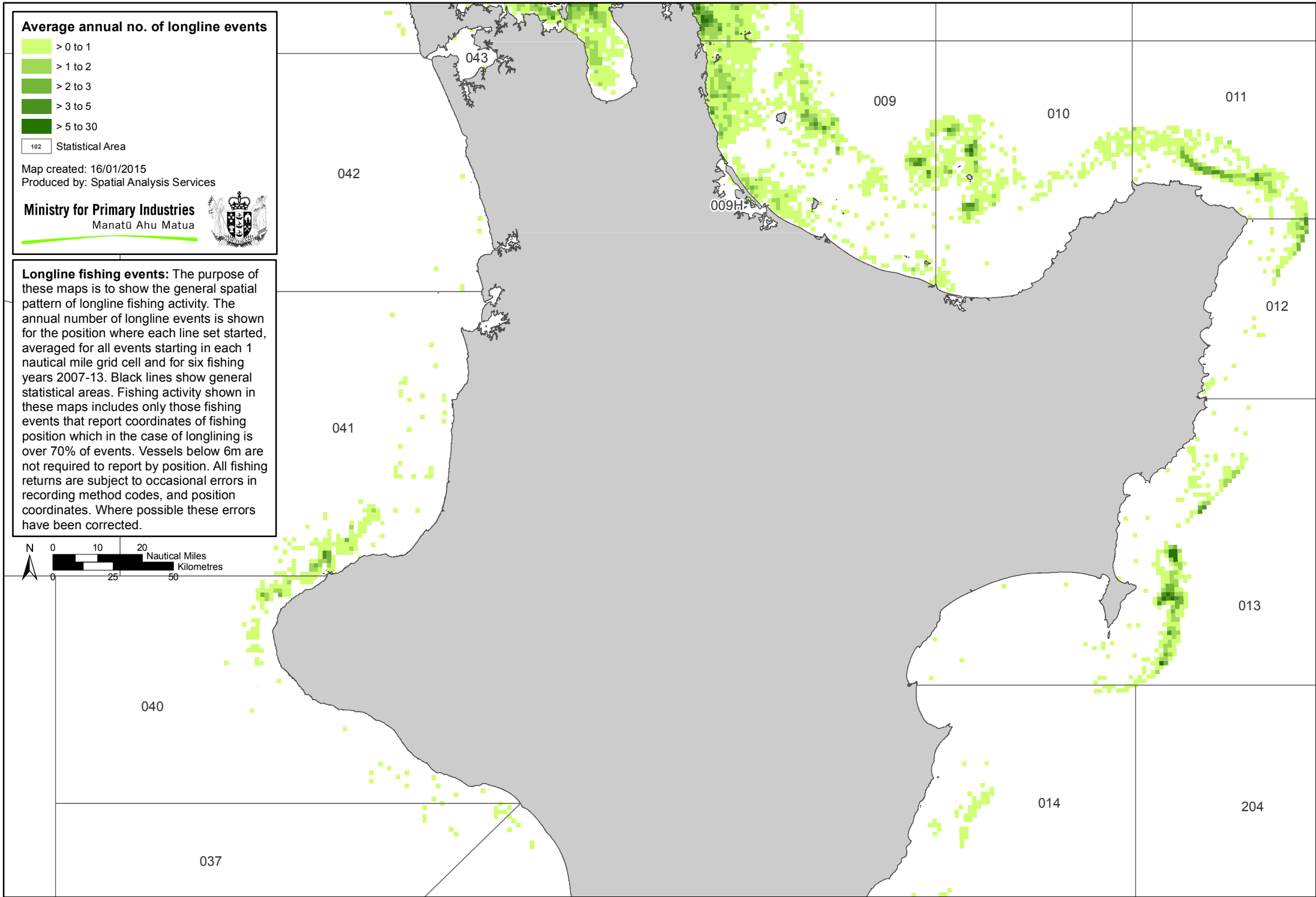
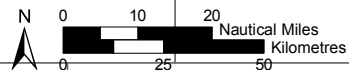
102 Statistical Area

Map created: 16/01/2015  
Produced by: Spatial Analysis Services

Ministry for Primary Industries  
Manatū Ahu Matua

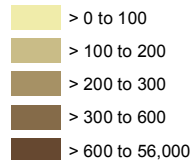


**Longline fishing events:** The purpose of these maps is to show the general spatial pattern of longline fishing activity. The annual number of longline events is shown for the position where each line set started, averaged for all events starting in each 1 nautical mile grid cell and for six fishing years 2007-13. Black lines show general statistical areas. Fishing activity shown in these maps includes only those fishing events that report coordinates of fishing position which in the case of longlining is over 70% of events. Vessels below 6m are not required to report by position. All fishing returns are subject to occasional errors in recording method codes, and position coordinates. Where possible these errors have been corrected.





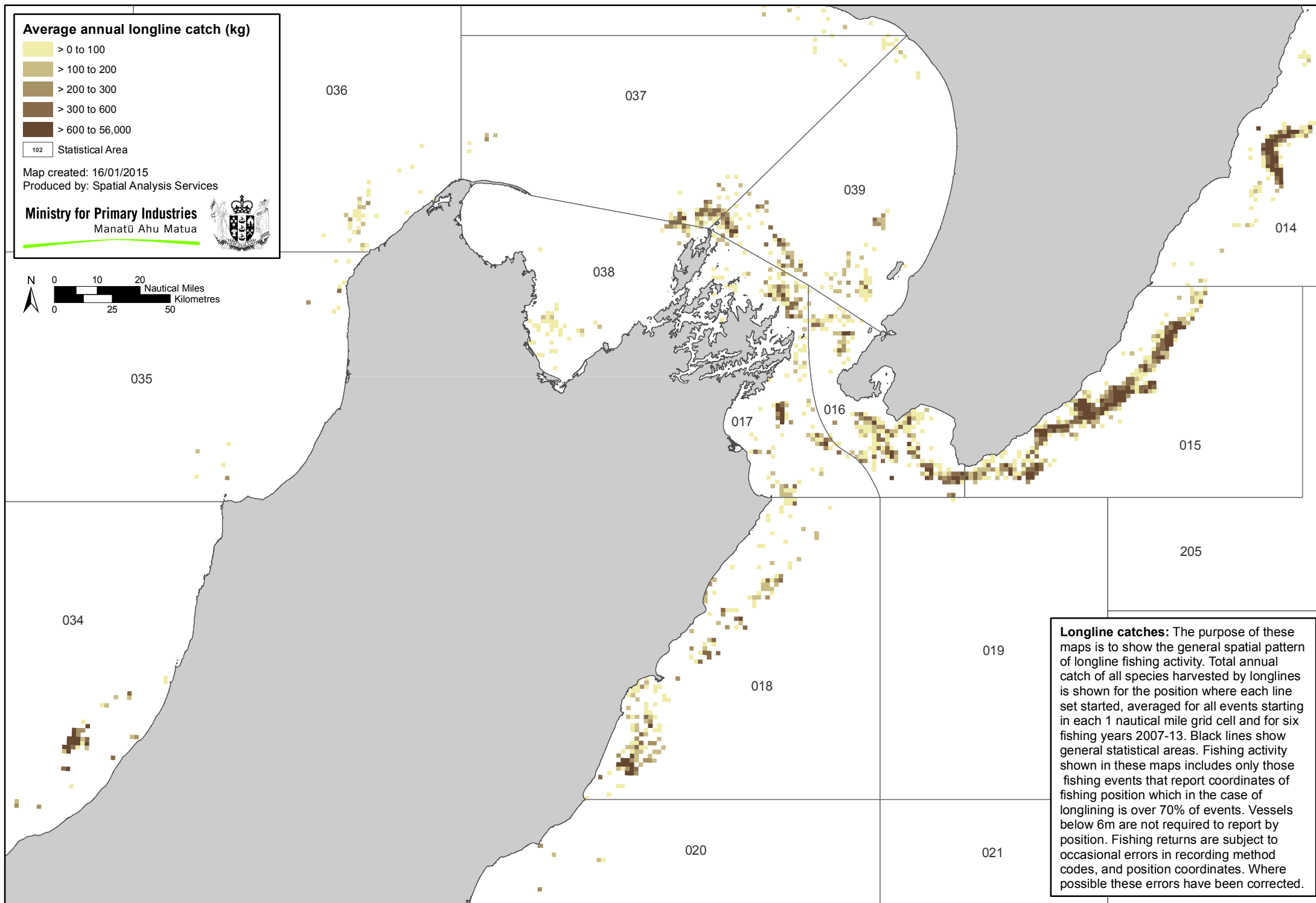
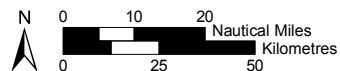
# Average annual longline catch (kg)



102 Statistical Area

Map created: 16/01/2015  
Produced by: Spatial Analysis Services

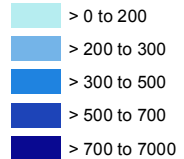
Ministry for Primary Industries  
Manatū Ahu Matua



**Longline catches:** The purpose of these maps is to show the general spatial pattern of longline fishing activity. Total annual catch of all species harvested by longlines is shown for the position where each line set started, averaged for all events starting in each 1 nautical mile grid cell and for six fishing years 2007-13. Black lines show general statistical areas. Fishing activity shown in these maps includes only those fishing events that report coordinates of fishing position which in the case of longlining is over 70% of events. Vessels below 6m are not required to report by position. Fishing returns are subject to occasional errors in recording method codes, and position coordinates. Where possible these errors have been corrected.



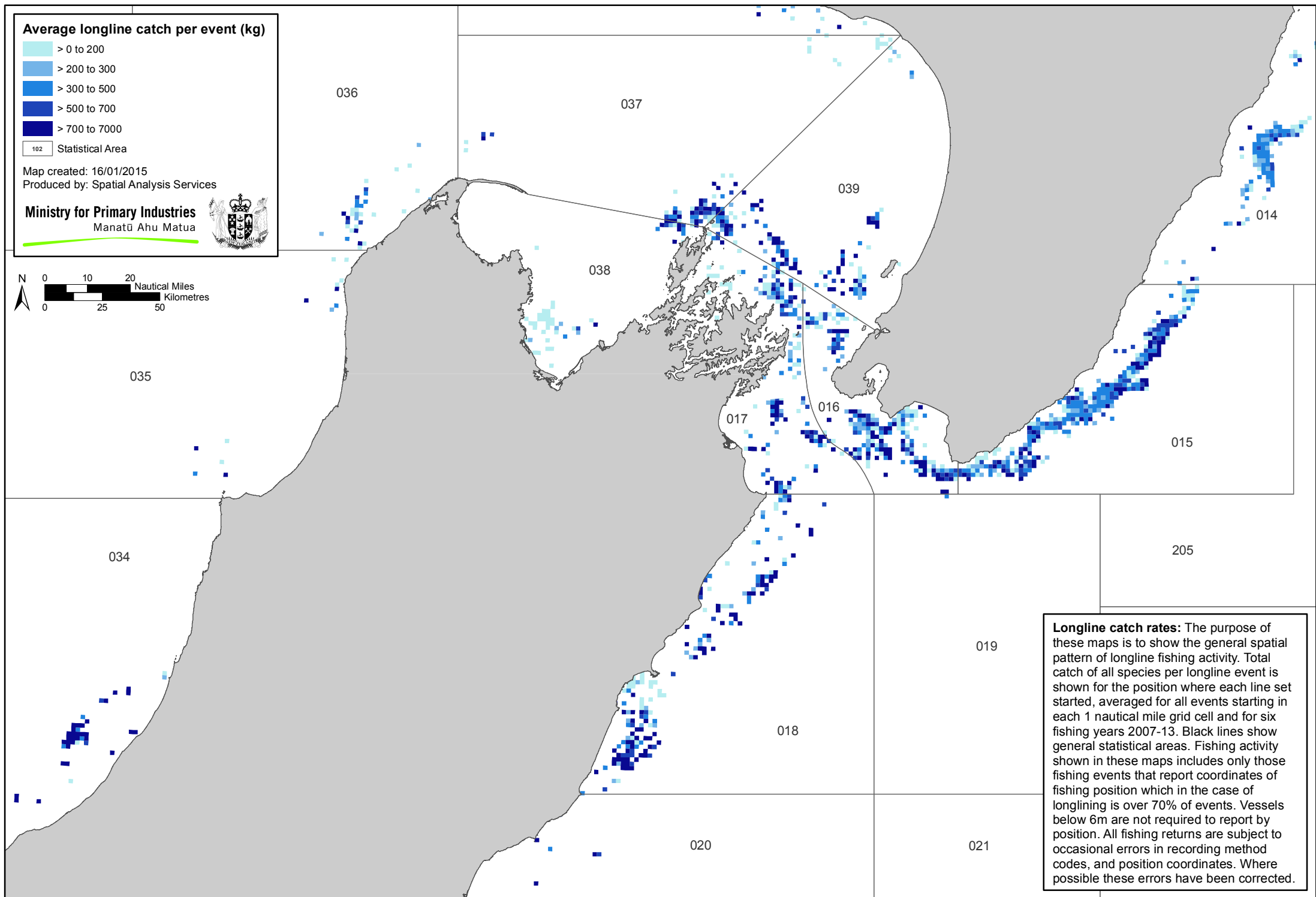
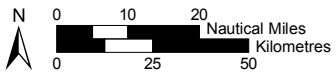
### Average longline catch per event (kg)



102 Statistical Area

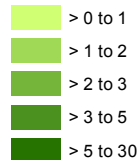
Map created: 16/01/2015  
Produced by: Spatial Analysis Services

Ministry for Primary Industries  
Manatū Ahu Matua



**Longline catch rates:** The purpose of these maps is to show the general spatial pattern of longline fishing activity. Total catch of all species per longline event is shown for the position where each line set started, averaged for all events starting in each 1 nautical mile grid cell and for six fishing years 2007-13. Black lines show general statistical areas. Fishing activity shown in these maps includes only those fishing events that report coordinates of fishing position which in the case of longlining is over 70% of events. Vessels below 6m are not required to report by position. All fishing returns are subject to occasional errors in recording method codes, and position coordinates. Where possible these errors have been corrected.

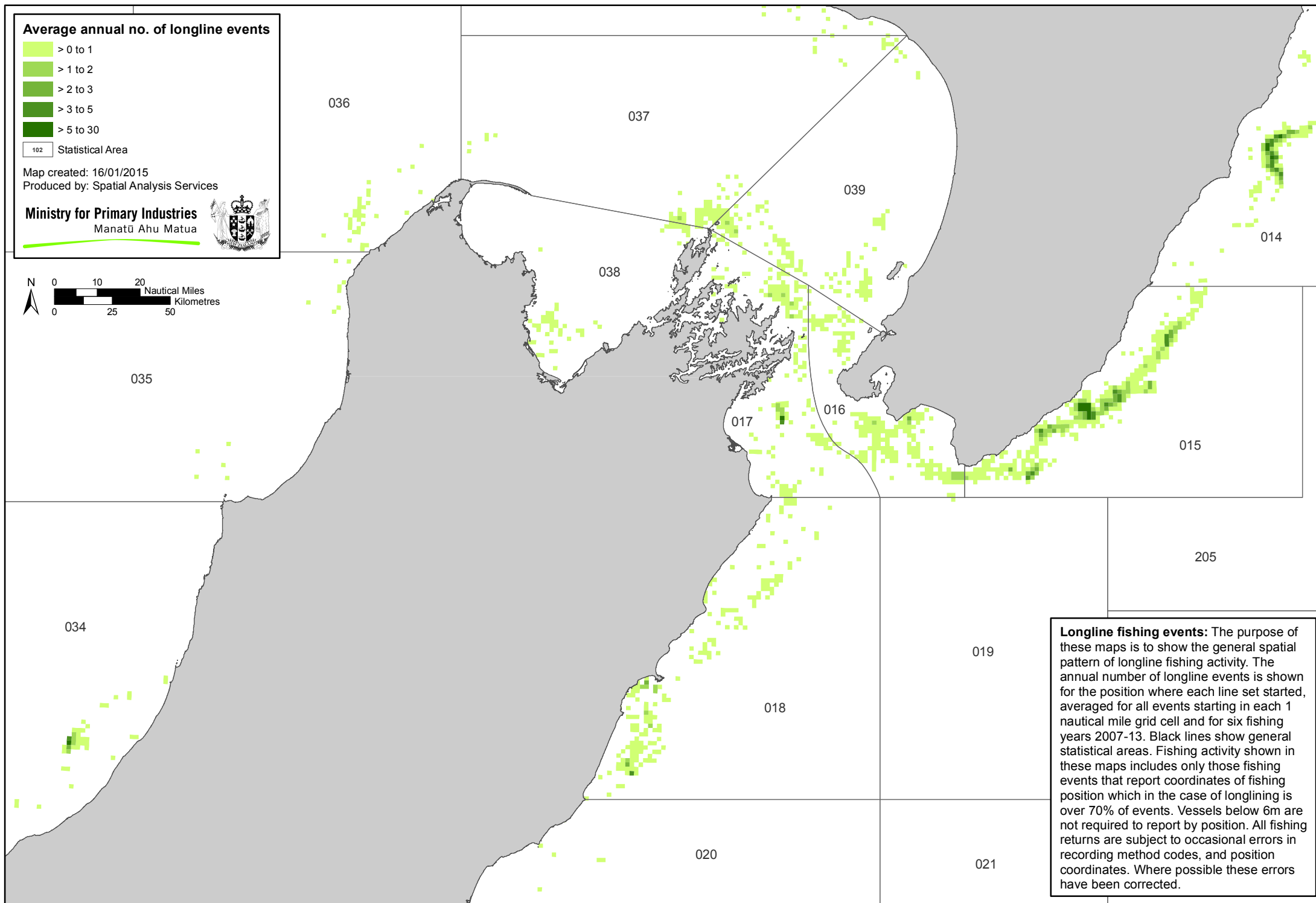
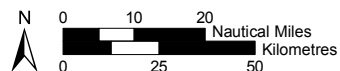
# Average annual no. of longline events



102 Statistical Area

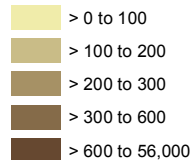
Map created: 16/01/2015  
Produced by: Spatial Analysis Services

Ministry for Primary Industries  
Manatū Ahu Matua



**Longline fishing events:** The purpose of these maps is to show the general spatial pattern of longline fishing activity. The annual number of longline events is shown for the position where each line set started, averaged for all events starting in each 1 nautical mile grid cell and for six fishing years 2007-13. Black lines show general statistical areas. Fishing activity shown in these maps includes only those fishing events that report coordinates of fishing position which in the case of longlining is over 70% of events. Vessels below 6m are not required to report by position. All fishing returns are subject to occasional errors in recording method codes, and position coordinates. Where possible these errors have been corrected.

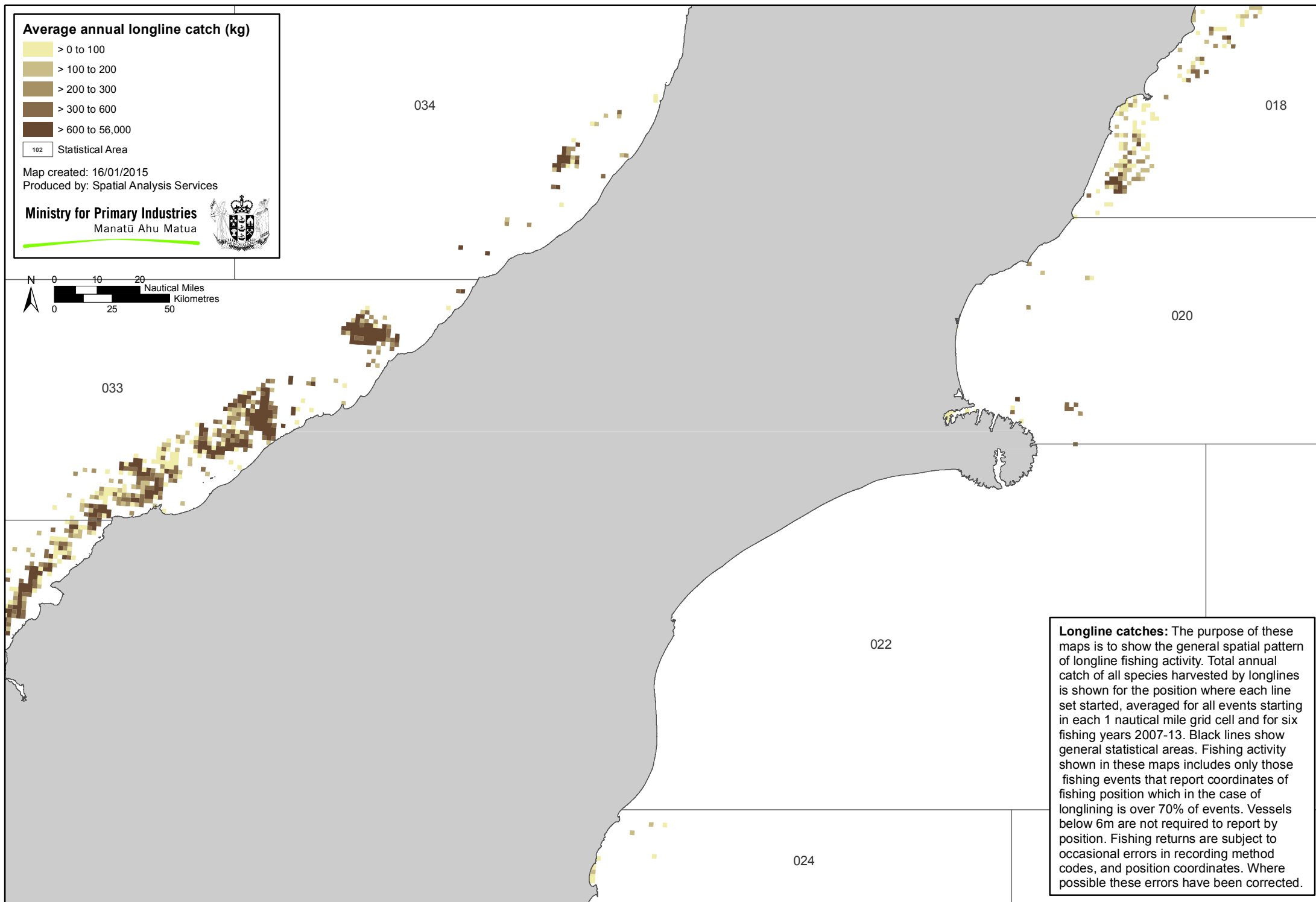
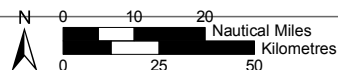
### Average annual longline catch (kg)



102 Statistical Area

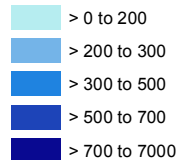
Map created: 16/01/2015  
Produced by: Spatial Analysis Services

Ministry for Primary Industries  
Manatū Ahu Matua



**Longline catches:** The purpose of these maps is to show the general spatial pattern of longline fishing activity. Total annual catch of all species harvested by longlines is shown for the position where each line set started, averaged for all events starting in each 1 nautical mile grid cell and for six fishing years 2007-13. Black lines show general statistical areas. Fishing activity shown in these maps includes only those fishing events that report coordinates of fishing position which in the case of longlining is over 70% of events. Vessels below 6m are not required to report by position. Fishing returns are subject to occasional errors in recording method codes, and position coordinates. Where possible these errors have been corrected.

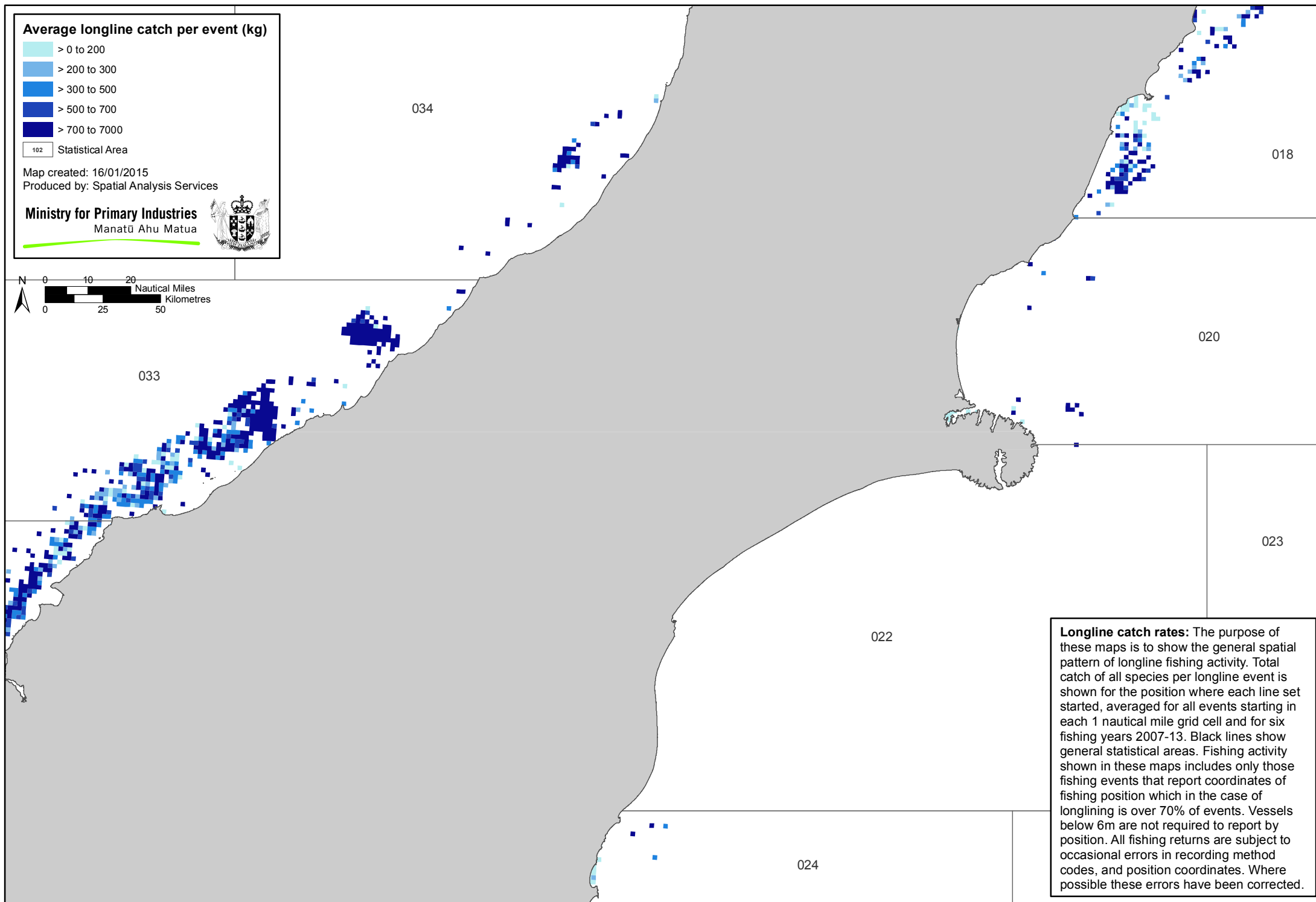
### Average longline catch per event (kg)



102 Statistical Area

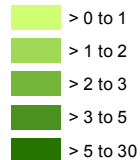
Map created: 16/01/2015  
Produced by: Spatial Analysis Services

Ministry for Primary Industries  
Manatū Ahu Matua



**Longline catch rates:** The purpose of these maps is to show the general spatial pattern of longline fishing activity. Total catch of all species per longline event is shown for the position where each line set started, averaged for all events starting in each 1 nautical mile grid cell and for six fishing years 2007-13. Black lines show general statistical areas. Fishing activity shown in these maps includes only those fishing events that report coordinates of fishing position which in the case of longlining is over 70% of events. Vessels below 6m are not required to report by position. All fishing returns are subject to occasional errors in recording method codes, and position coordinates. Where possible these errors have been corrected.

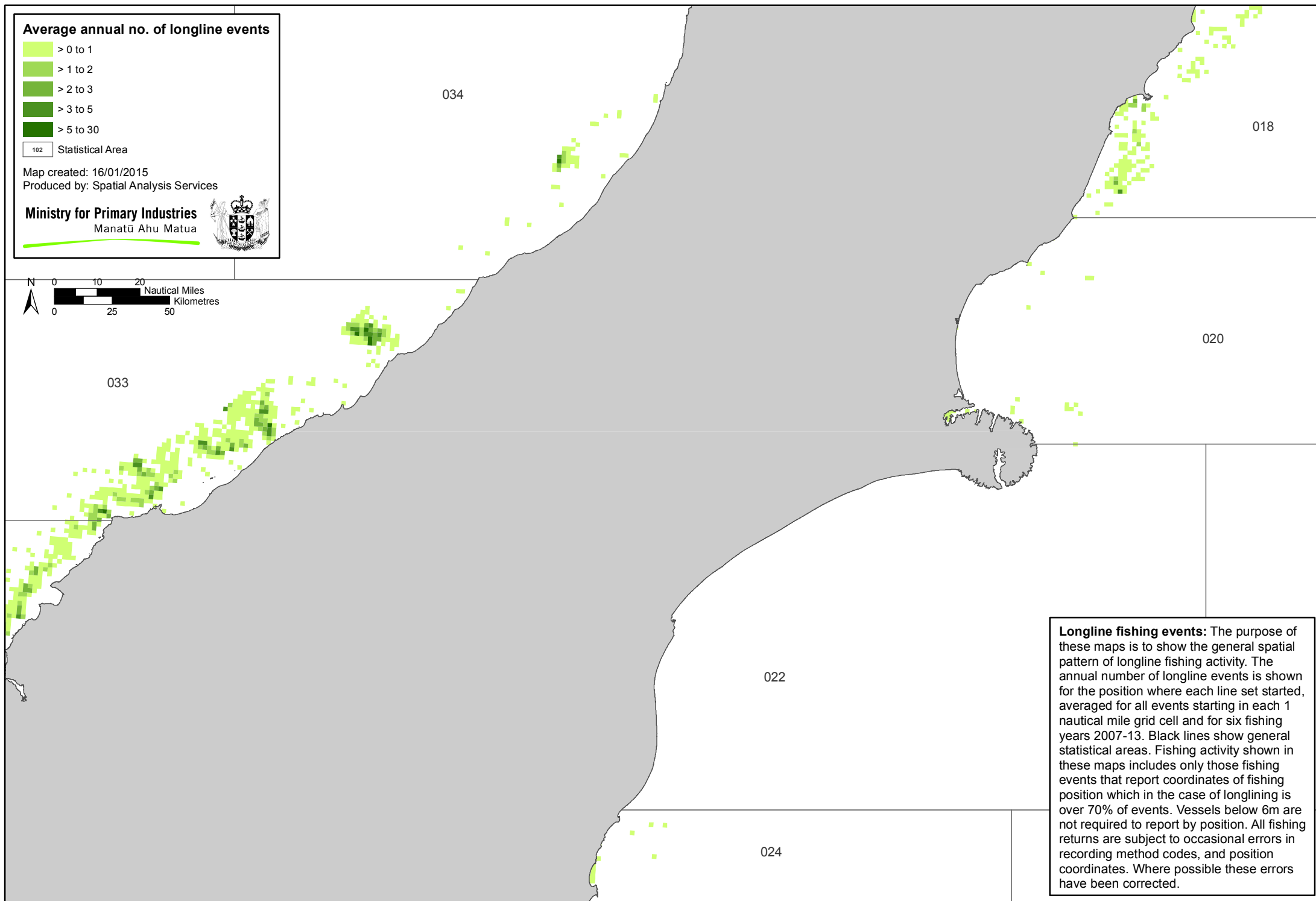
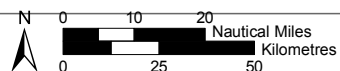
### Average annual no. of longline events



102 Statistical Area

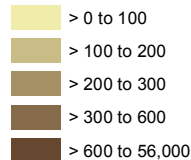
Map created: 16/01/2015  
Produced by: Spatial Analysis Services

Ministry for Primary Industries  
Manatū Ahu Matua



**Longline fishing events:** The purpose of these maps is to show the general spatial pattern of longline fishing activity. The annual number of longline events is shown for the position where each line set started, averaged for all events starting in each 1 nautical mile grid cell and for six fishing years 2007-13. Black lines show general statistical areas. Fishing activity shown in these maps includes only those fishing events that report coordinates of fishing position which in the case of longlining is over 70% of events. Vessels below 6m are not required to report by position. All fishing returns are subject to occasional errors in recording method codes, and position coordinates. Where possible these errors have been corrected.

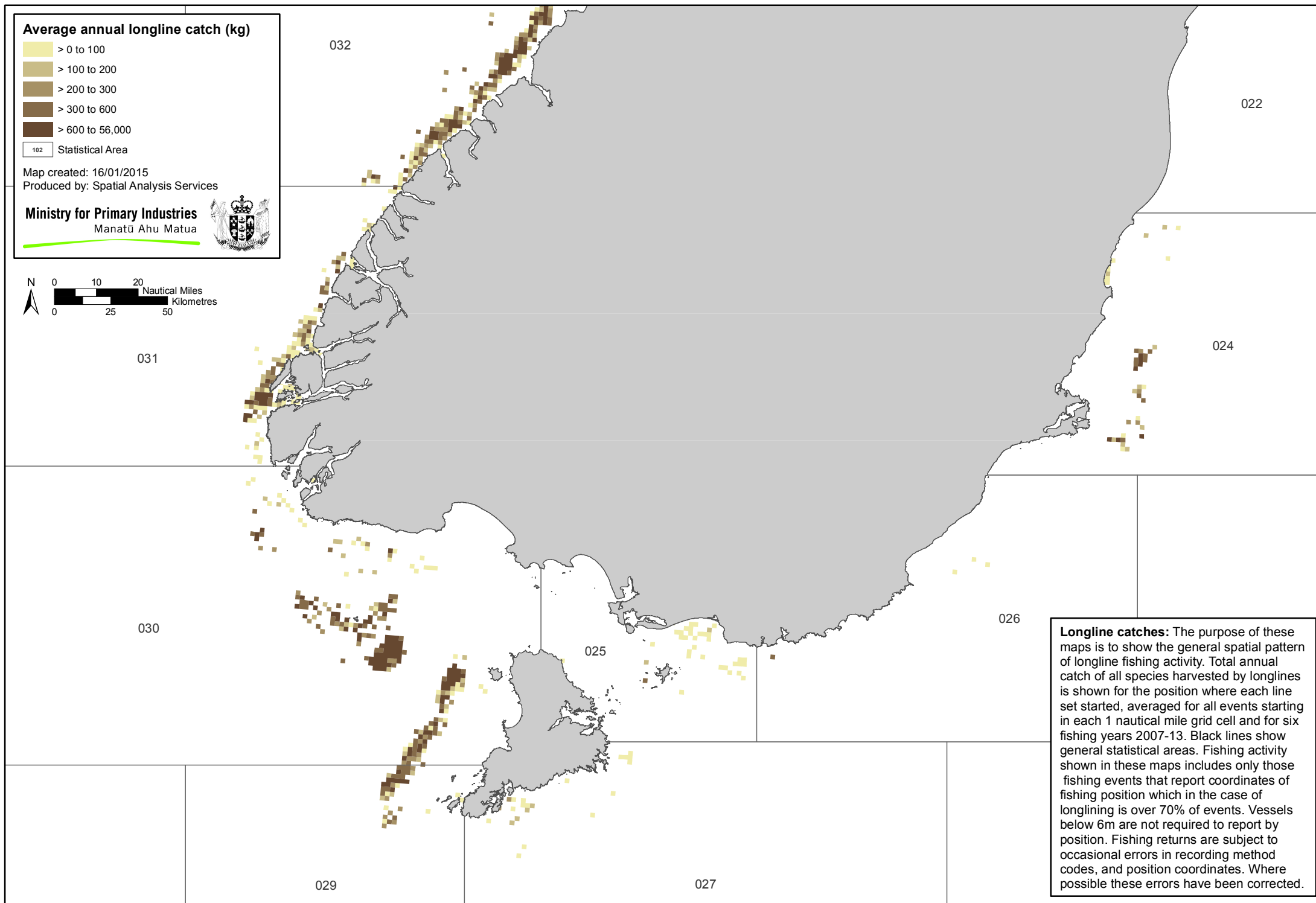
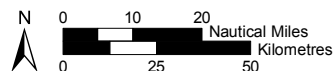
# Average annual longline catch (kg)



102 Statistical Area

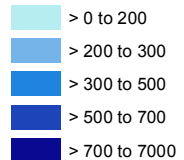
Map created: 16/01/2015  
Produced by: Spatial Analysis Services

Ministry for Primary Industries  
Manatū Ahu Matua



**Longline catches:** The purpose of these maps is to show the general spatial pattern of longline fishing activity. Total annual catch of all species harvested by longlines is shown for the position where each line set started, averaged for all events starting in each 1 nautical mile grid cell and for six fishing years 2007-13. Black lines show general statistical areas. Fishing activity shown in these maps includes only those fishing events that report coordinates of fishing position which in the case of longlining is over 70% of events. Vessels below 6m are not required to report by position. Fishing returns are subject to occasional errors in recording method codes, and position coordinates. Where possible these errors have been corrected.

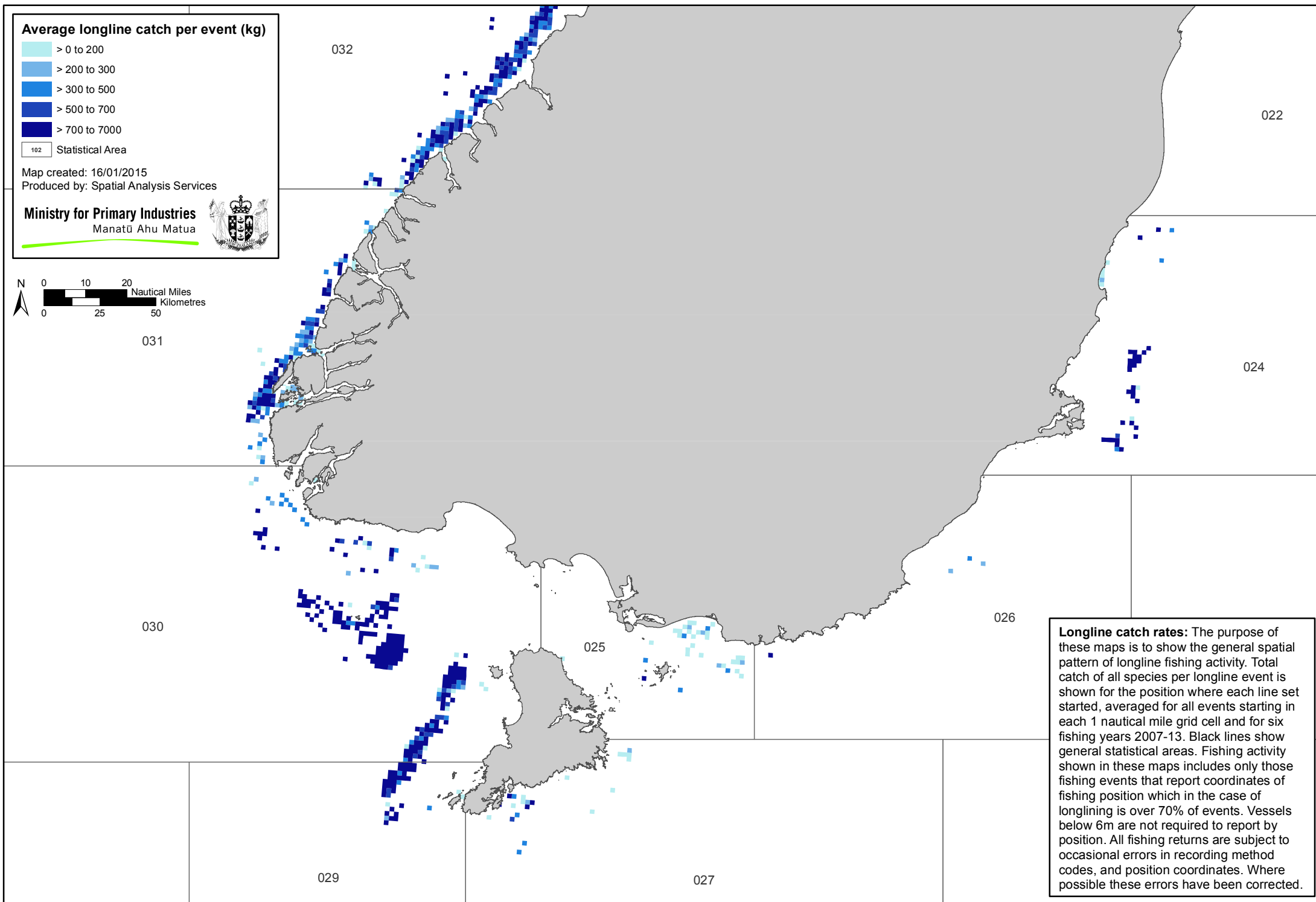
### Average longline catch per event (kg)



102 Statistical Area

Map created: 16/01/2015  
Produced by: Spatial Analysis Services

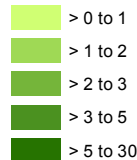
Ministry for Primary Industries  
Manatū Ahu Matua



**Longline catch rates:** The purpose of these maps is to show the general spatial pattern of longline fishing activity. Total catch of all species per longline event is shown for the position where each line set started, averaged for all events starting in each 1 nautical mile grid cell and for six fishing years 2007-13. Black lines show general statistical areas. Fishing activity shown in these maps includes only those fishing events that report coordinates of fishing position which in the case of longlining is over 70% of events. Vessels below 6m are not required to report by position. All fishing returns are subject to occasional errors in recording method codes, and position coordinates. Where possible these errors have been corrected.



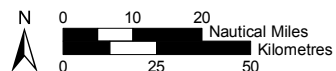
# Average annual no. of longline events



102 Statistical Area

Map created: 16/01/2015  
Produced by: Spatial Analysis Services

Ministry for Primary Industries  
Manatū Ahu Matua



031

030

032

029

025

027

026

024

022

**Longline fishing events:** The purpose of these maps is to show the general spatial pattern of longline fishing activity. The annual number of longline events is shown for the position where each line set started, averaged for all events starting in each 1 nautical mile grid cell and for six fishing years 2007-13. Black lines show general statistical areas. Fishing activity shown in these maps includes only those fishing events that report coordinates of fishing position which in the case of longlining is over 70% of events. Vessels below 6m are not required to report by position. All fishing returns are subject to occasional errors in recording method codes, and position coordinates. Where possible these errors have been corrected.