

# CARPENTER ANTS

Carpenter ants (*Camponotus* sp.) are **not established** in New Zealand but if you think you have seen any please phone the Ministry for Primary Industries **Pest and Disease Hotline on 0800 80 99 66**.

## WHAT DO THEY LOOK LIKE?

Carpenter ants can vary in size but adults typically measure 6–12mm. They can vary in colour from red to black. Australian carpenter ants tend to be brown at the head with a honey coloured mid-section and a dark brown abdomen.

## WHAT TO LOOK FOR AND WHERE

Look for large ants, ants with wings and ant nests both inside and outside. Carpenter ants are often most active at night and can be found near sources of water. Nests commonly occur in wood but can be present in other materials. Carpenter ants tend to be bigger than New Zealand ants.



## IF YOU THINK YOU HAVE SEEN CARPENTER ANTS IN OR NEAR YOUR PROPERTY PLEASE:

- » Do not disturb or try to treat the nest (disturbance may cause the ants to move a queen out of the nest to start a new colony).
- » Call MPI's Pest and Disease Hotline on **0800 80 99 66** to report your sighting and if possible, take a photo.

[www.mpi.govt.nz](http://www.mpi.govt.nz)

## THE THREAT

Carpenter ants don't often establish outside their native ranges. Carpenter ants do not eat wood, however, they can cause damage to wooden structures by creating galleries in wood. The ants also have the potential to bite. Carpenter ants do not appear to spread rapidly, or move large distances without human assistance.

## WHAT DO I DO IF I GET BITTEN?

Carpenter ants have the potential to bite if disturbed. Due to their large size, the bite can be painful and potentially break the skin. If you have been bitten by an ant and have any concerns please see your doctor.

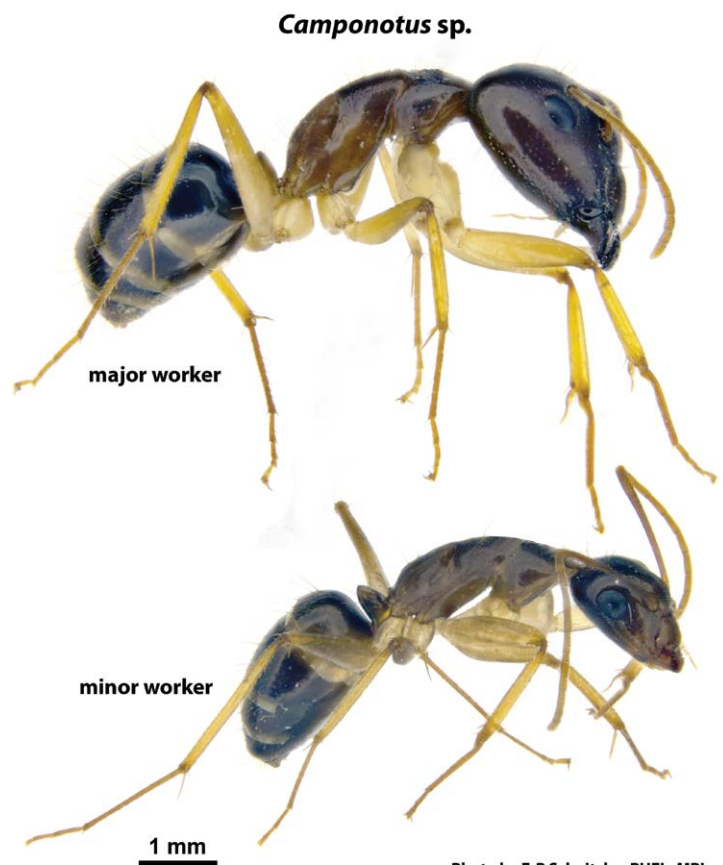


Photo by F-R Schnitzler, PHEL, MPI